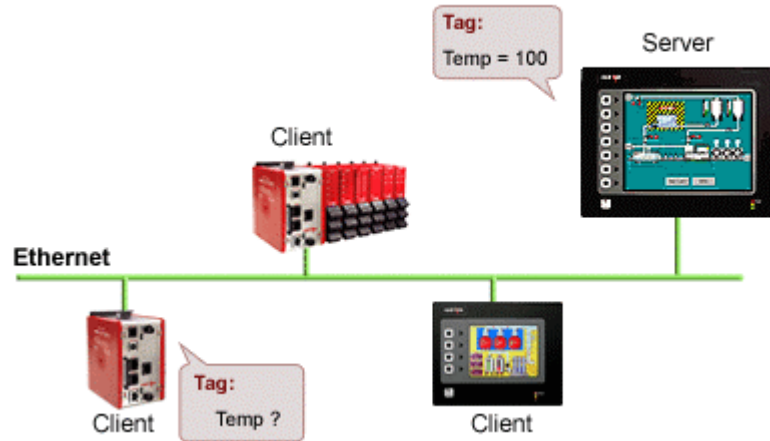


OPC LINK

DESCRIPTION



The G3's OPC Link is an easy way to connect multiple G3s together. G3 to G3 communication is achieved in minutes using direct tag access from one unit to another.

BENEFITS

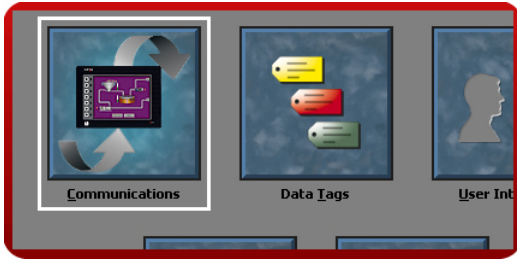
- Easily connect HMIs together using Ethernet.
- Exchange data seamlessly between connected equipment.

EXAMPLE

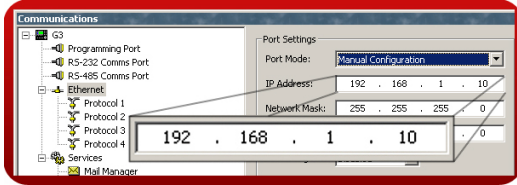
An OEM manufacturer installs an HMI on each side of the autoclave systems that they manufacture. Each HMI looks identical, and allows the operator to control the equipment from either side. OPC Link allows one panel to get the PLC data from the other, thereby reducing configuration time.

Programming the Server

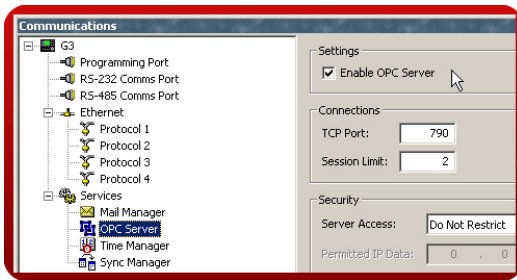
Step 1 Enter the "Communications" module.



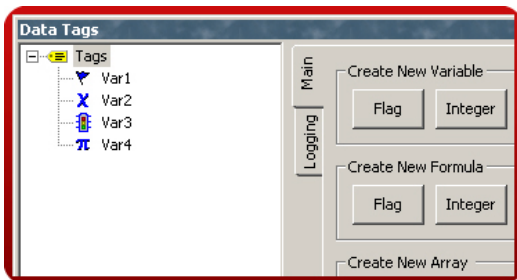
Step 2 Select the Ethernet port and enter the G3 server IP address.



Step 3 Activate the OPC server in the G3.

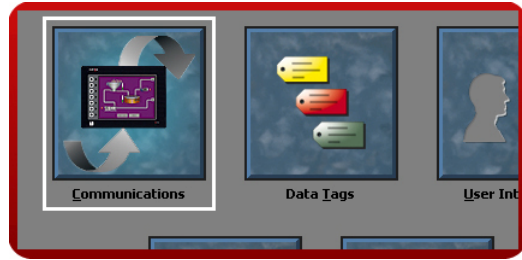


Step 4 Set up your tags as desired in the database.

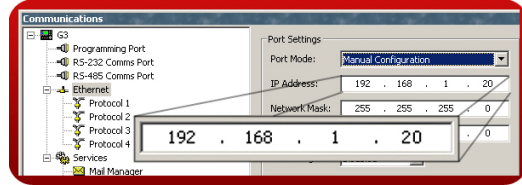


Programming the Client

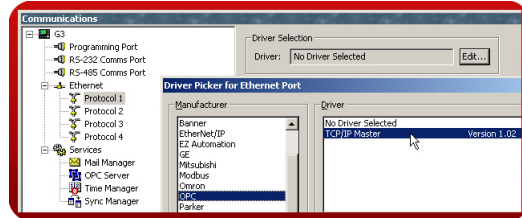
Step 5 Enter the "Communications" module.



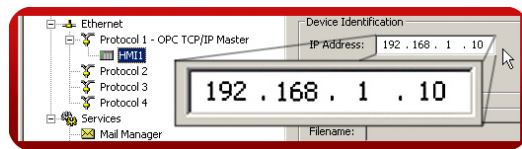
Step 6 Select the Ethernet port and enter the G3 client IP address.



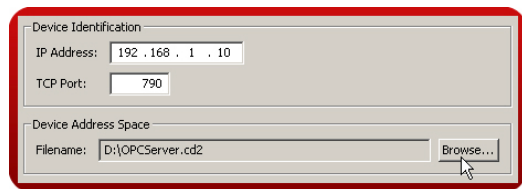
Step 7 Select Protocol 1 and set up the OPC TCP/IP Master driver.



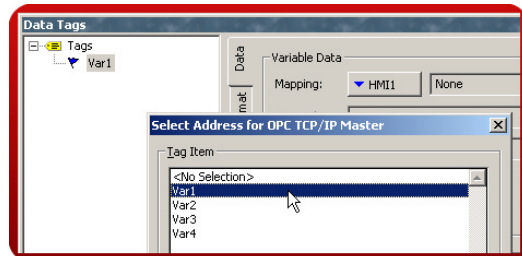
Step 8 Select the HMI1 and enter the IP address.



Step 9 Reference the server's database.



Step 10 In "Data Tags", the client tags can be mapped directly to the server tags.



Reference: [http://www.redlion.net/g3features/G3 Feature - OPClink.html](http://www.redlion.net/g3features/G3%20Feature%20OPClink.html)

For more information on Crimson 2.0, refer to the manual.