

# SYMBOL LIBRARY

## DESCRIPTION



The free Crimson 2.0 configuration software contains over 4000 industrial graphics in over 60 different categories. Now you can create a professional looking HMI user interface with very little effort.

## BENEFITS

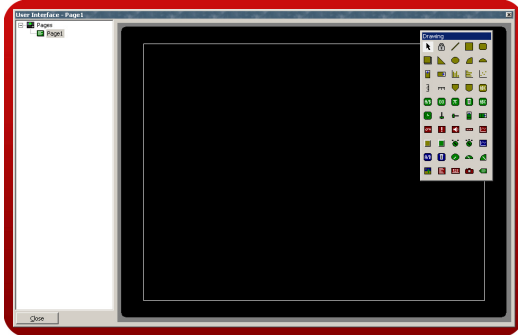
- Provides realistic graphics for your application.
- Saves database development time.

## ADD PROFESSIONAL GRAPHICS IN JUST 5 STEPS

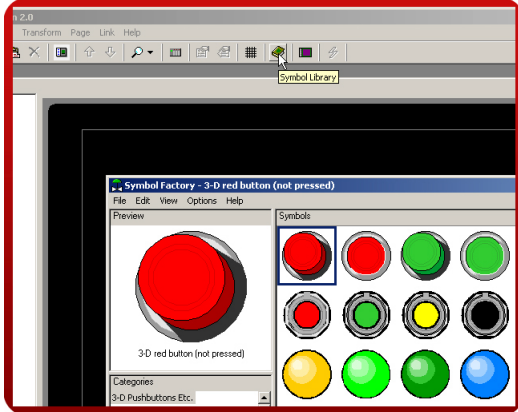
**Step 1** Enter the "User Interface" module.



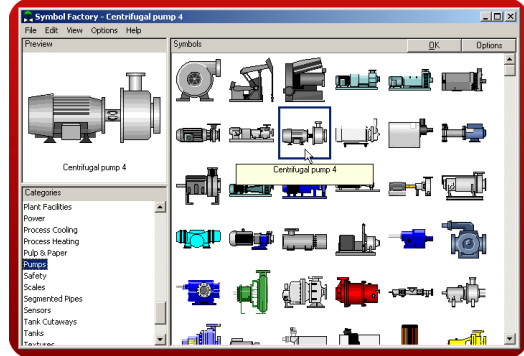
**Step 2** Click on the display.



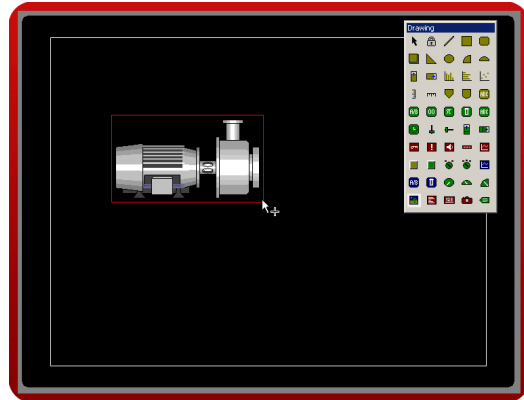
**Step 3** Click on the symbol library.



**Step 4** Select a symbol and click ok.



**Step 5** Click and drag on to the screen to insert the symbol.



Reference: <http://www.redlion.net/g3features/G3 Feature - Symbol Library.html>

For more information on Crimson 2.0, refer to the manual.