

WEB SERVER

DESCRIPTION



Through use of the G3's built-in web server, any page within the database is immediately accessible via web browser. This allows remote personnel to view, as well as control, the HMI from anywhere in the world. For added flexibility, the G3 can also be configured to serve custom HTML pages created in any HTML editor.

BENEFITS

- Remotely access your application from anywhere.
- Access your system information and status, download process data and log files.

EXAMPLE

A carwash owner uses the G3 to connect to his various installations via a web browser. This allows him to check the condition of each bay's equipment, as well as the financial performance of each location. If intervention is required, e.g. shutdown due to a water leak, the customer can take action without leaving his home.

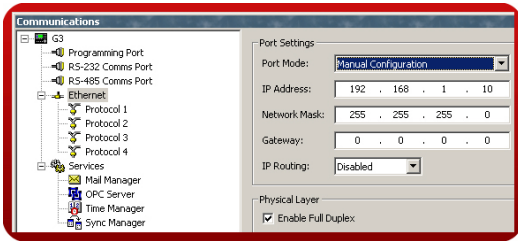


ACTIVATING THE WEB SERVER

Step 1 Enter the "Communications" module.



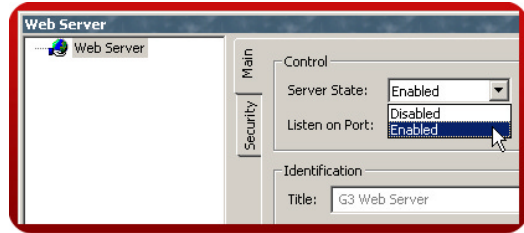
Step 2 Enable the Ethernet port.



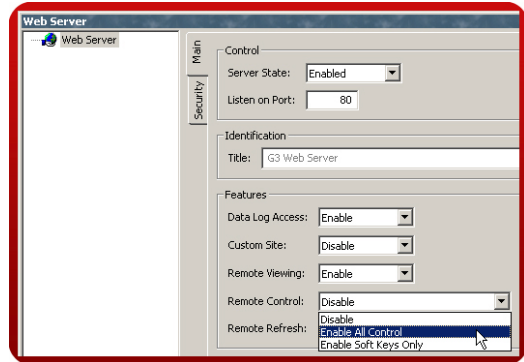
Step 3 Enter the "Web Server" module.



Step 4 Enable the server.



Step 5 Enable the desired level of remote control.



Web Server set up complete!

Reference: <http://www.redlion.net/G3features/G3 Feature - WebServer.html>

For more information on Crimson 2.0, refer to the manual.