

# SECURITY MANAGER

## DESCRIPTION



The Security Manager provides multi-user, multilevel password protection. The advanced security logger tracks operator actions as well as any data changes for later review.

## BENEFITS

- Protect your machine from unauthorized operators and easily manage users.
- Log all users' actions for production follow up.
- Get the history of all your parameter modifications for faultfinding and maintenance.

## EXAMPLE

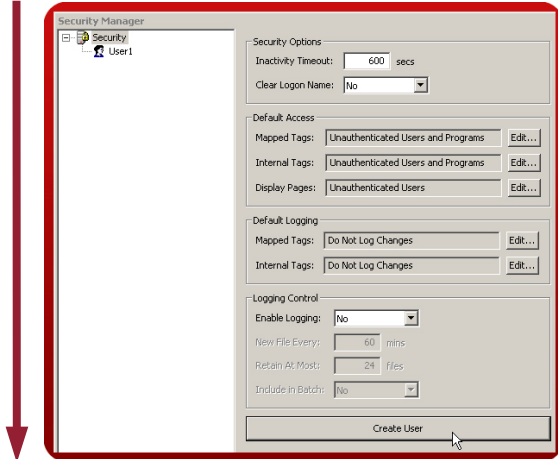
An OEM specializing in sterilization equipment provides his customer with multi-user password protection and logging for his system of autoclaves. This allows management to review operator access when quality issues arise.

## SECURE PAGE ACCESS IN 8 STEPS

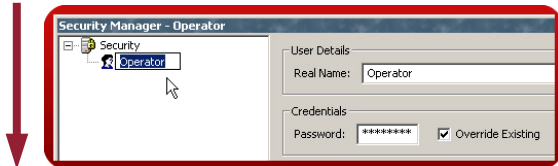
**Step 1** Enter the "Security Manager" module.



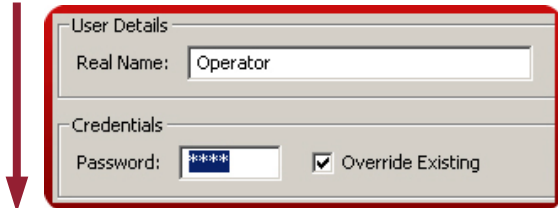
**Step 2** Create a new user.



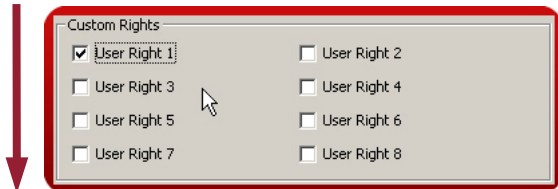
**Step 3** Enter a username and real name.



**Step 4** Set the password.



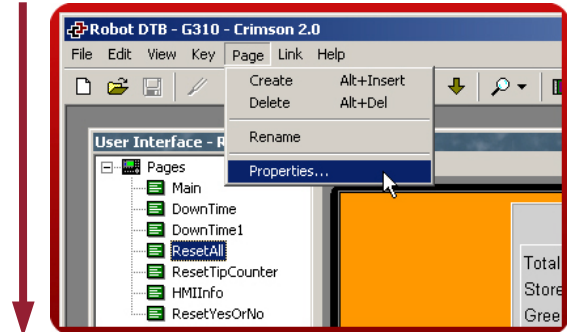
**Step 5** Assign user rights.



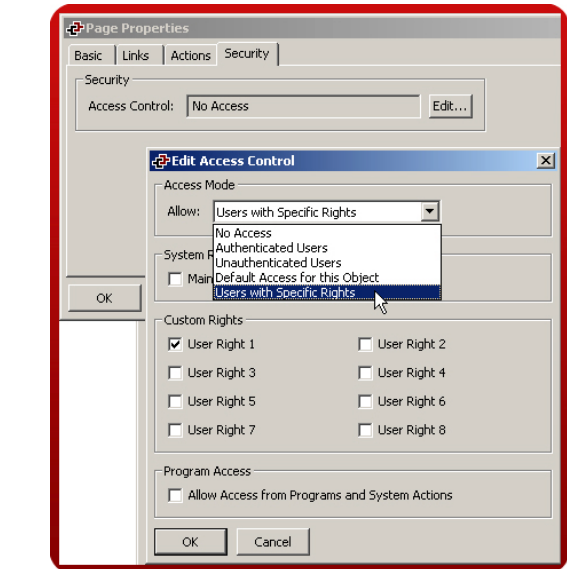
**Step 6** Enter the "User Interface" module.



**Step 7** Select the page to protect and go to properties.



**Step 8** On the security tab, edit the access right for this page.



Only users with access right 1 can access the page. Attempts to access this page will result in a login popup window.

Security Manager setup complete!

Reference: [http://www.redlion.net/g3features/G3 Feature - Security\\_Manager.html](http://www.redlion.net/g3features/G3 Feature - Security_Manager.html)

For more information on Crimson 2.0, refer to the manual