

EMULATOR

DESCRIPTION



The Emulator provides a unique facility to design and test your application. This not only allows you to test the user interface portion of your G3 HMI configuration; it also allows you to test data logging and even the web server!

BENEFITS

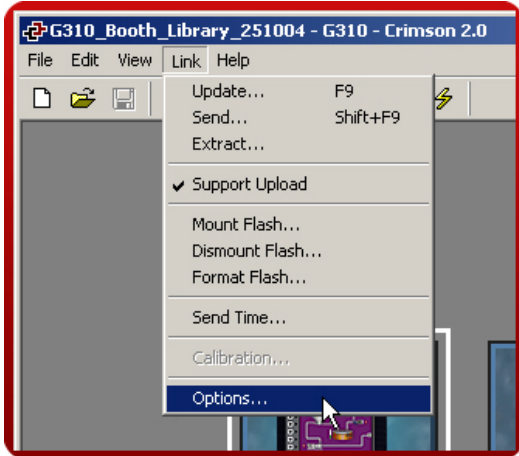
- Test your database directly on computer, no hardware required.
- View the web server and log files to preview data available for your customer.
- Simplify database development and save time by testing your program enhancement straight away.

EXAMPLE

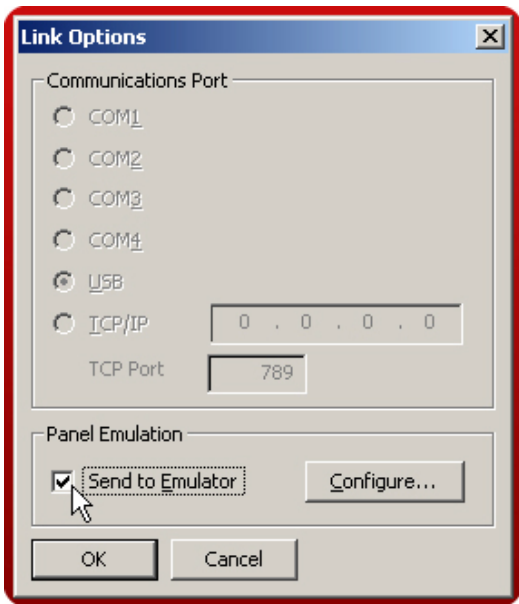
A special purpose machine manufacturer develops a new database for each new project. The emulator gives him the opportunity to review and test his database design before hardware delivery, saving time when performing on-site commissioning.

SETTING UP THE EMULATOR

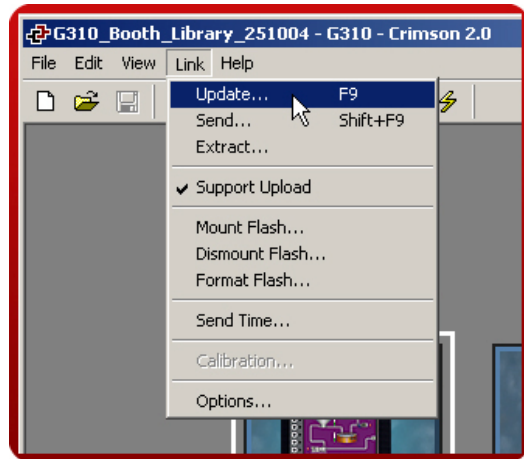
Step 1 Click on Link>Options



Step 2 Select "Send to Emulator".



Step 3 Click on Link>Update or F9 to download your application in the Emulator.



Step 4 The emulated G3 pops up on your PC screen.



Emulator setup complete!

Reference: <http://www.redlion.net/g3features/G3 Feature - Emulator.html>

For more information on Crimson 2.0, refer to the manual.