

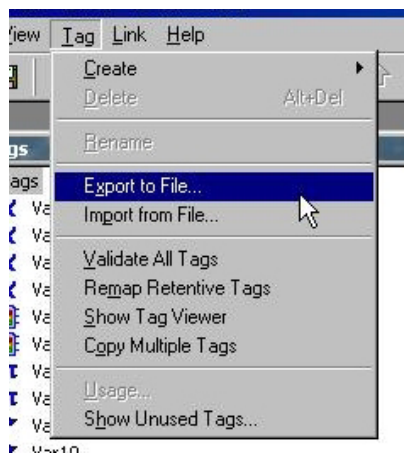
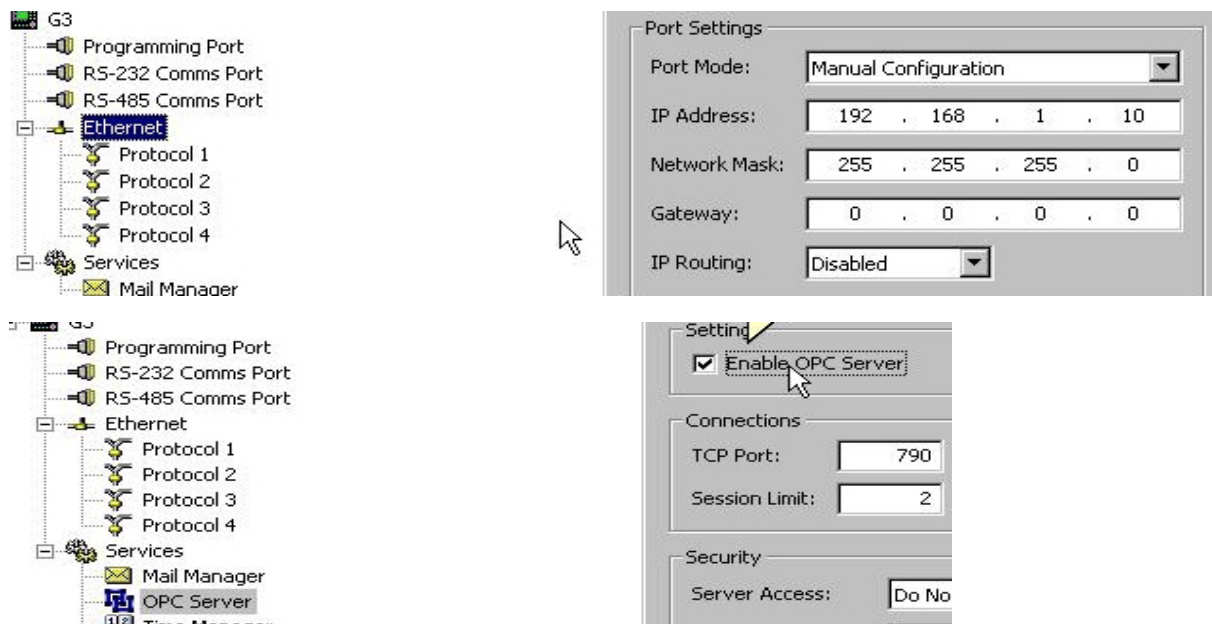
TECHNICAL NOTE TNOI28

Title: Using the OPC Master Driver Product(s): G3 and SX family products

Problem Description: You want to share data between 2 Crimson 2 based products, but using a Modbus Master and Slave combination is too cumbersome.

Corrective Action: Enable the OPC server on one or both devices, depending if you need to share data from both devices. Enable the OPC Master Driver on one or both devices.

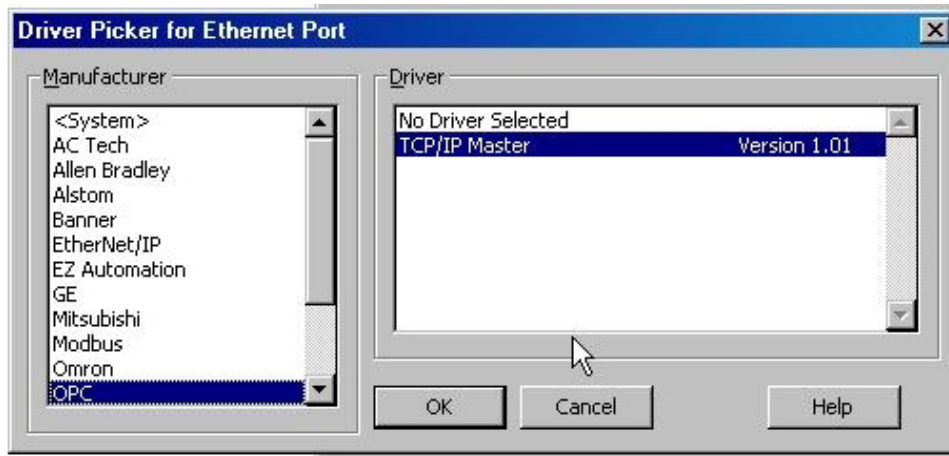
Corrective Action Implementation: The first thing to do is write the database for the unit(s) where the data will come from. Once the database is complete, enable Ethernet (if it has not already been enabled) as well as enabling the OPC server in the Communications section.



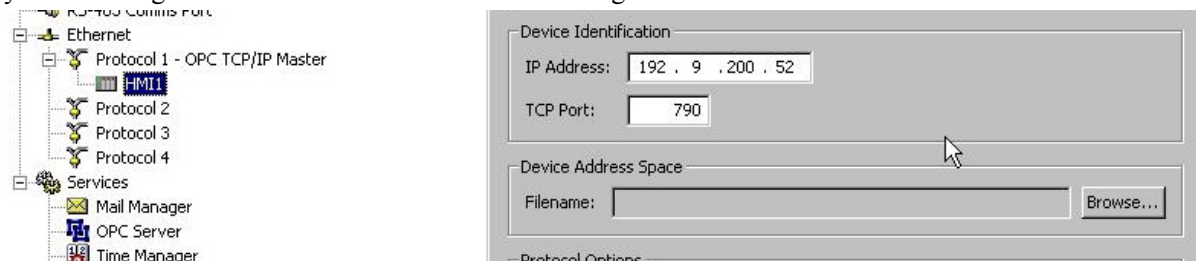
Save the database. Next open the Data Tags section and click Tag->Export to File from the menu bar. Choose a location that you will remember to save the file. You are now done with this database.

Browse to the saved CSV file from the Export process. Open this file with Excel. Change all of the rows in Column C to HMI1. Next Copy all of Column A and paste it into Column D. Change Column E to 0 (zero) for flag types, and None for all other types. Column F is used for the access. If you want to read and write the values, use 0. For Write Only use 1, Read Only is 2. Save and close the file.

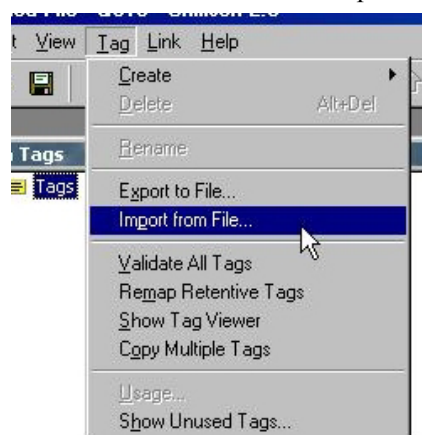
Next open or create the G3 file that will access the values from the first database. First open the communications section and enable Ethernet, just like you did in the last database, make sure you use a unique IP address. Assign the OPC Master driver to one of the available Ethernet protocols.



Next click on HMI1, which you may rename. For the sake of following this example leave the name HMI1, you can change it later. You will now see the following screen:



You do not need to worry about the IP address or TCP port at this point, the next step will automatically configure them. Click the Browse button and locate the first file we worked with. You will notice that the IP address and TCP port have changed to match the settings from the previous database. Close the Communications section and open the Data Tags section. Click Tag -> Import From File.



Browse to the modified CSV file you saved after exporting from the previous database.

All of the tags from the previous database have now been imported into the new database.