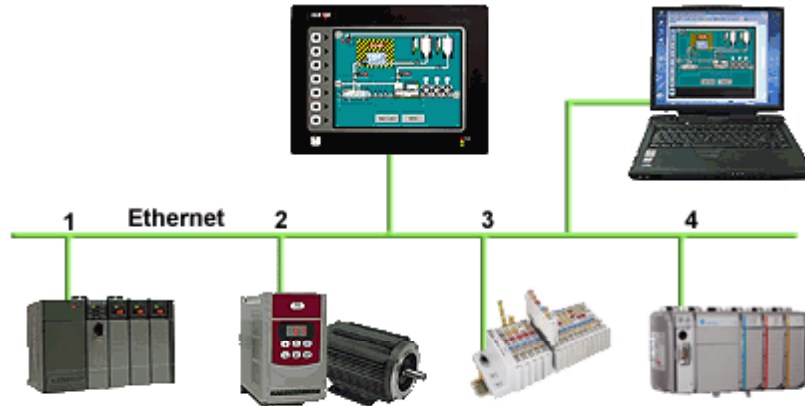


ETHERNET CONNECTIVITY

DESCRIPTION



With an Ethernet port capable of running four protocols, in addition to all of the serial ports, the G3 is the most powerful communications platform available today. Pick the best-in-class PLC, drive, temperature controllers, etc. for your next machine. The Red Lion G3 will make sure they communicate seamlessly to one another.

BENEFITS

- Connect any Ethernet enabled equipment to the HMI and access the device's data.
- Up to 4 different protocols provide extensive communication on Ethernet with more than 30 built in drivers for easy programming.
- Gateway functionalities to transfer data from any HMI serial port to Ethernet and vice versa.

EXAMPLE

A customer wanted to connect his existing Ethernet based PLC to a drive, which was also equipped with Ethernet. By using the protocol capability of the G3 series HMI, the customer integrated the two easily.

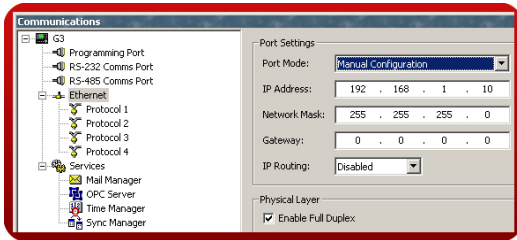
By upgrading existing machines with the G3 series HMI, the customer immediately added Ethernet connectivity to them – something that was previously considered too costly. Now these machines are capable of providing production data, without the risk associated with attempting to upgrade the PLC.

ETHERNET COMMUNICATION IN JUST 4 STEPS

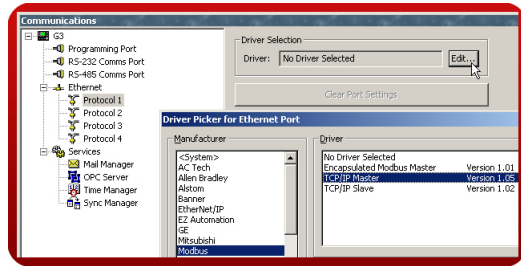
Step 1 Enter the "Communications" module.



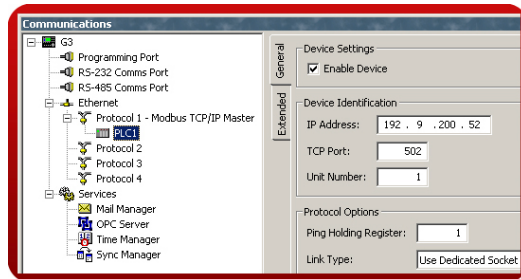
Step 2 Select the Ethernet port and enter the G3's IP address.



Step 3 Select the manufacturer and pick a driver.



Step 4 Enter the target device's IP address.



Ethernet communication setup complete!

Reference: <http://www.redlion.net/g3features/G3 Feature - Ethernet.html>

For more information on Crimson 2.0, refer to the manual.