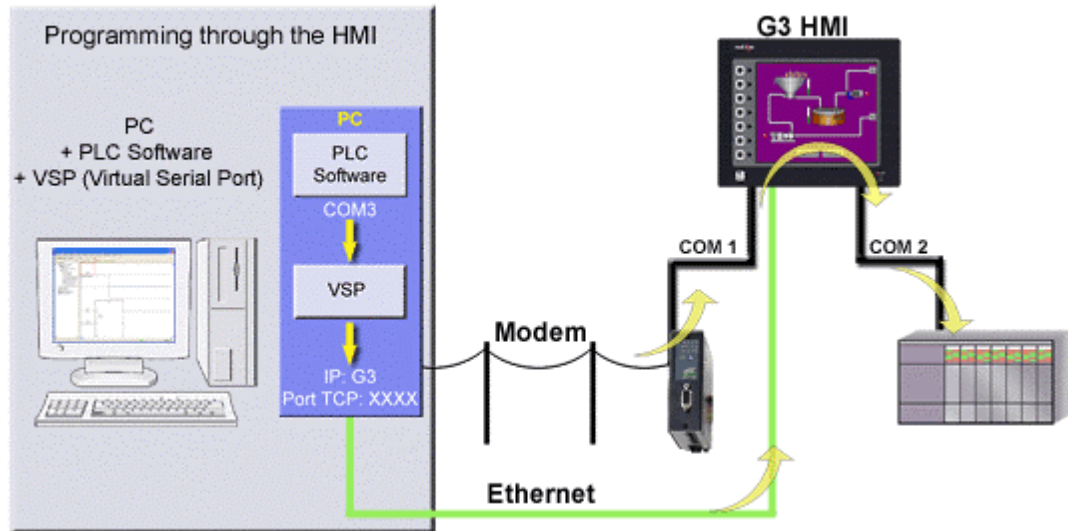


PASS THROUGH PROGRAMMING

DESCRIPTION



Pass-through programming is a unique feature, which allows you to program your connected devices remotely*. Using either a modem or an Ethernet connection, you can reprogram your PLC, motor drive, etc. from anywhere in the world.

BENEFITS

- Remotely maintenance your application by accessing any serial devices connected to the HMI.
- Save time and money by solving simple problems remotely.

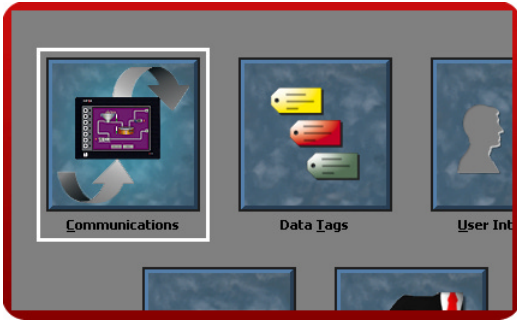
EXAMPLE

A power generator manufacturer can remotely access his rental generator and upload the latest patch for his PLC. In case of a problem, PLC programs can be looked at, debugged and downloaded again.

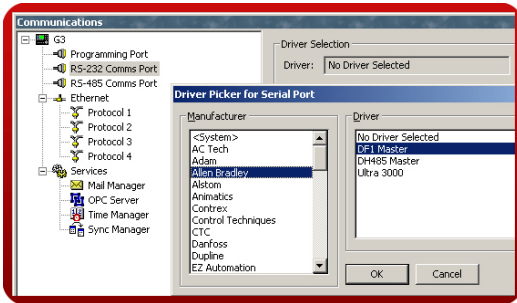


PASS-THROUGH PROGRAMMING IN JUST 7 STEPS

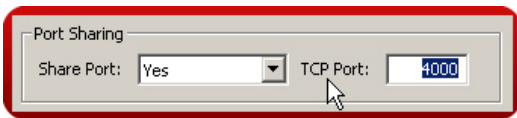
Step 1 Enter the "Communications" module.



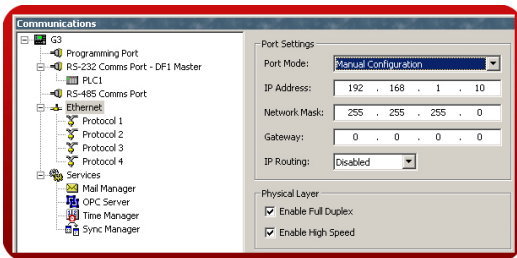
Step 2 Select the driver for your PLC.



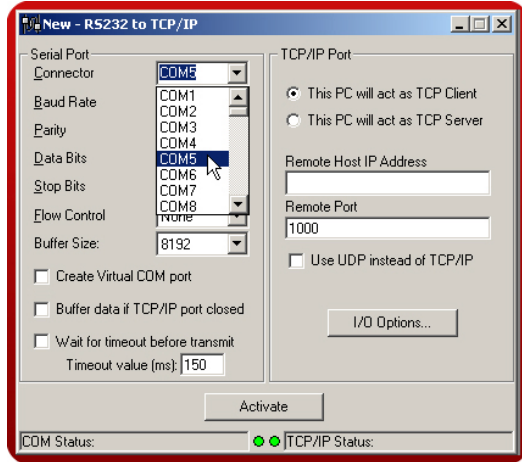
Step 3 Share the port with a TCP socket.



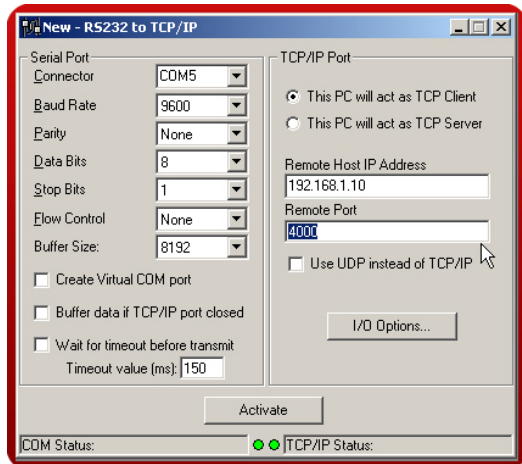
Step 4 Enable the G3's Ethernet port.



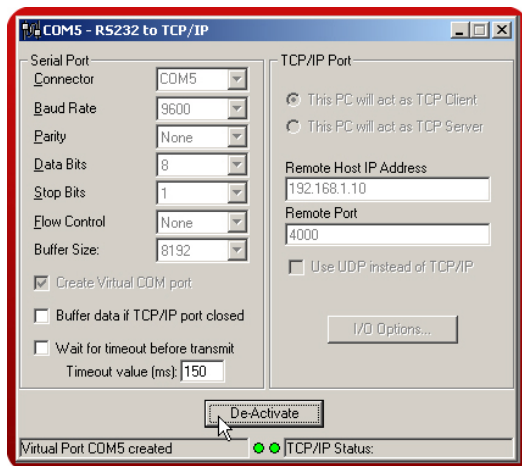
Step 5 Run any VSP Software (Example below is TCP Com) and define the COM port your PLC software will be using.



Step 6 Define the host IP address, which is the G3, and the targeted TCP port.



Step 7 Activate the port.



Your PLC software is now ready to use this virtual port as if it was connected directly to the PC.

Reference: <http://www.redlion.net/G3features/G3 Feature - Pass through.html>

For more information on Crimson 2.0, refer to the manual.

* Some PLCs do not support this feature. Profibus, CAN Open and Devicenet do not support pass-through.