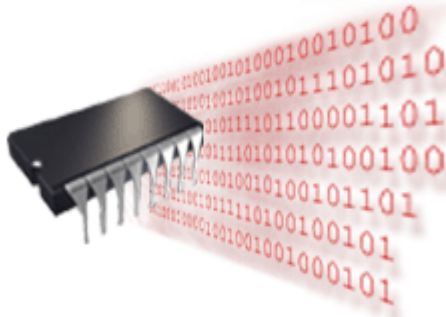


NON VOLATILE MEMORY

DESCRIPTION



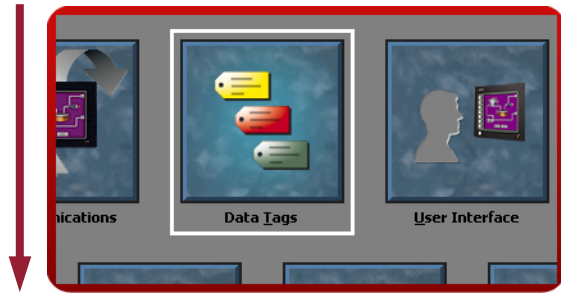
Using on-board flash, the G3 doesn't rely on a battery to maintain its database. No longer will your machine go down for the sake of a \$2.00 battery.

BENEFITS

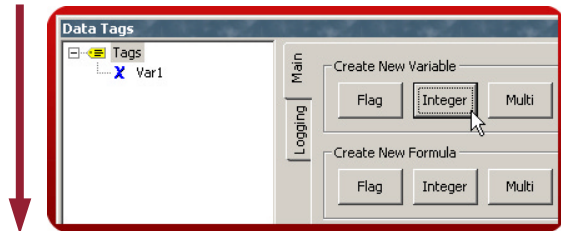
- Save all your recipes and system variables on board.
- No extra memory necessary on the PLC.

RETENTIVE TAGS CONFIGURATION IN 4 STEPS

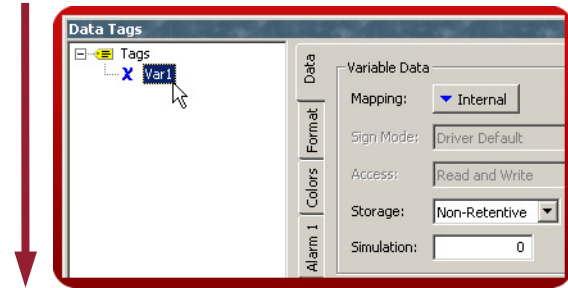
Step 1 Enter the "Data Tags" module.



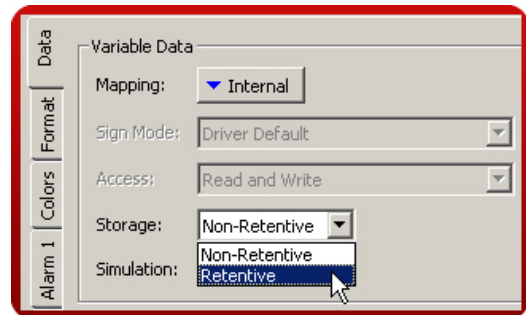
Step 2 Create a variable.



Step 3 Select the variable.



Step 4 In the data tab, set the tag to retentive.



For efficiency, the G3 caches several minutes' worth of writes before committing to memory.

Retentive memory setup complete!

Reference: [http://www.redlion.net/G3features/G3 Feature - Flash_Memory.html](http://www.redlion.net/G3features/G3%20Feature%20-%20Flash_Memory.html)

For more information on Crimson 2.0, refer to the manual.