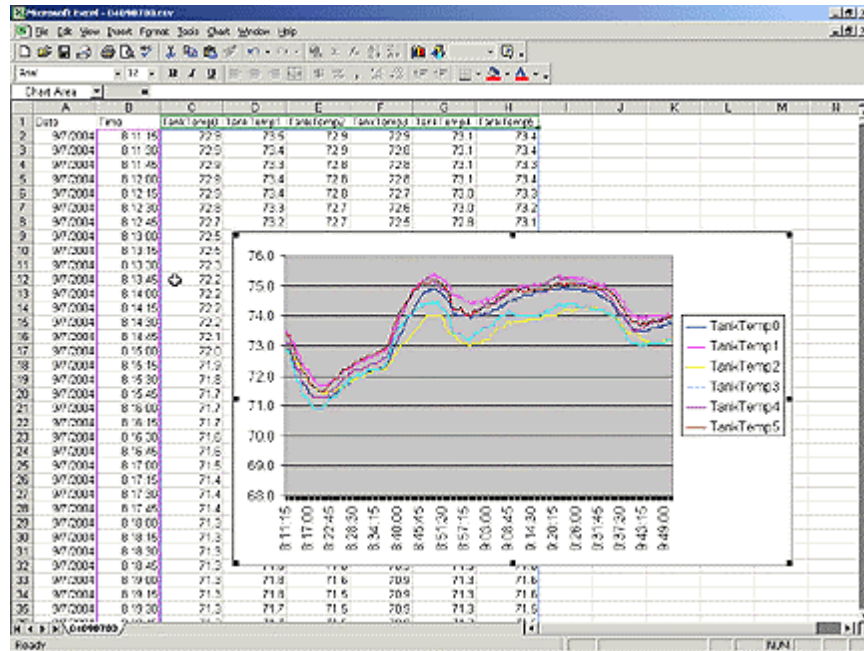


DATA LOGGING

DESCRIPTION



The G3 will log tags at user-programmable rates, and automatically time/date stamp them. The information is stored in open CSV file format, allowing you to access them with virtually any application, such as Microsoft Excel.

BENEFITS

- Record your system's performance for faultfinding or process improvement.
- Facilitate preventive maintenance by monitoring critical area of your system.
- Built in data logger provides "IT-Ready" data in CSV file format.

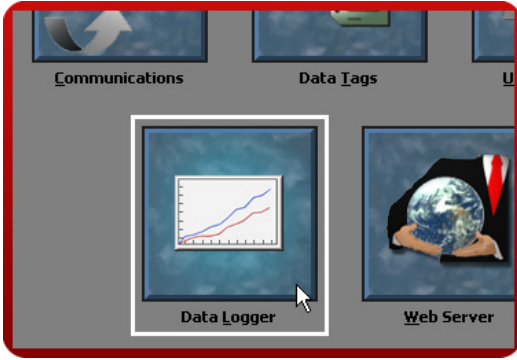
EXAMPLE

A cold storage facility uses the G3 to monitor and record multiple refrigerators to ensure that the food is kept at safe temperatures. If a problem occurs, the G3 notifies the appropriate personnel before unsafe conditions are reached. Further, by monitoring the refrigeration system's response to events, such as a door causing a temperature rise, the health of the system can be evaluated.

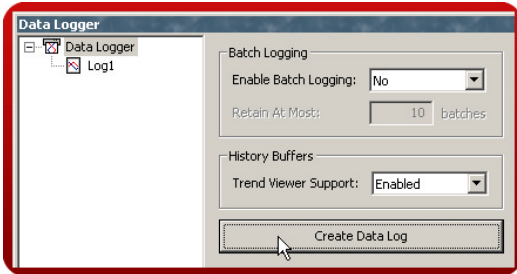


DATA LOGGING IN 6 STEPS

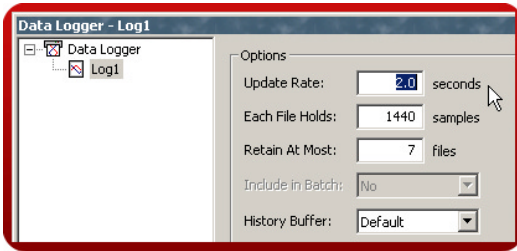
Step 1 Enter the "Data Logger" module.



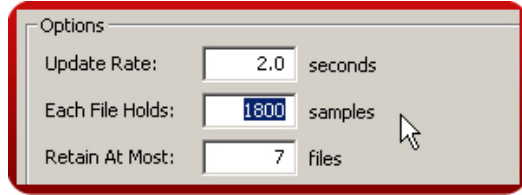
Step 2 Create a data log.



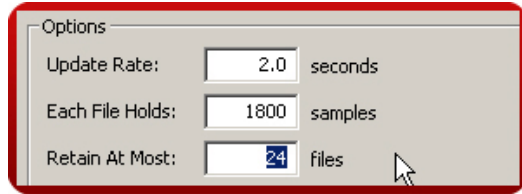
Step 3 Define the data logging sample rate.



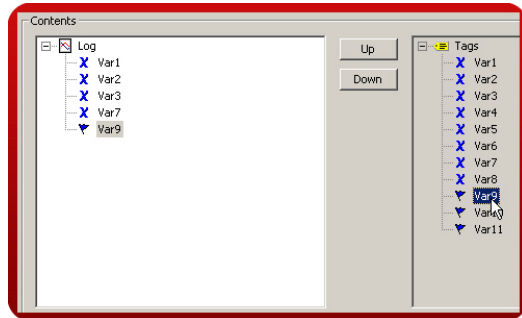
Step 4 Define the number of samples per file.



Step 5 Define the maximum number of files. The G3 automatically erases older files as new files are added.



Step 6 Add tags to the log by double-clicking them.



In this example, the G3 will log the last 24 hours of data, with each file representing one hour of samples.

Data Logging complete!

Reference: http://www.redlion.net/g3features/G3_Feature_-_Data_Logging.html

For more information on Crimson 2.0, refer to the manual.