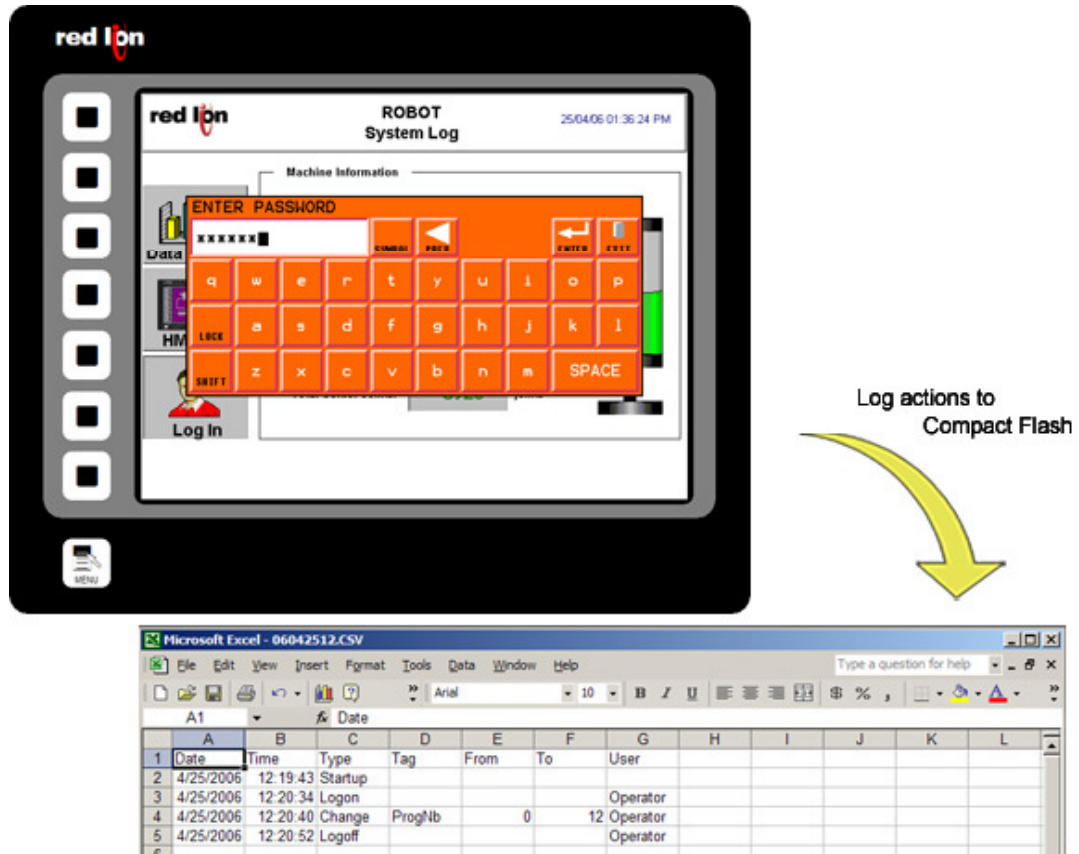


SECURITY LOGGING

DESCRIPTION



The Security Manager provides multi-user, multilevel password protection. The advanced security logger tracks operator actions as well as any data changes for later review.

BENEFITS

- Protect your machine from unauthorized operators and manage users and rights easily.
- Log all user actions for production follow up.
- Get the history of all your parameter modifications for faultfinding and maintenance.

EXAMPLE

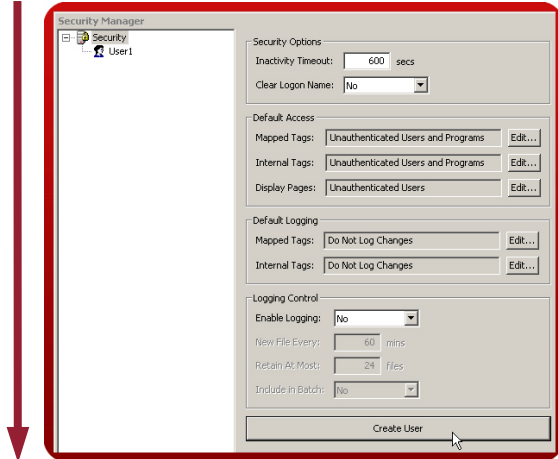
An OEM specializing in sterilization equipment provides his customer with multi-user password protection for his autoclaves system. Production error due to operator failure can be found with the security logger. This allows management to review operator access when quality issues arise.

SECURE PAGE ACCESS IN 8 STEPS

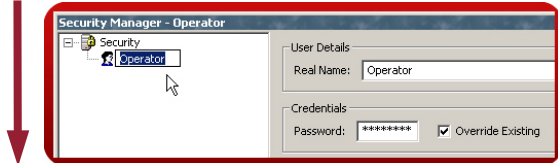
Step 1 Enter the "Security Manager" module.



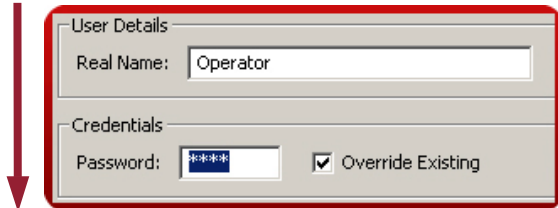
Step 2 Create a new user.



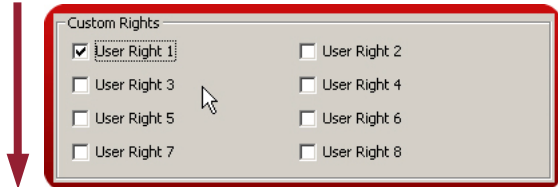
Step 3 Enter a username and real name.



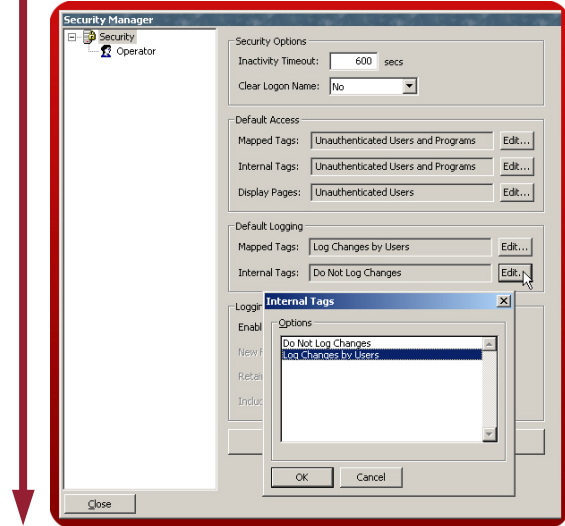
Step 4 Set the password.



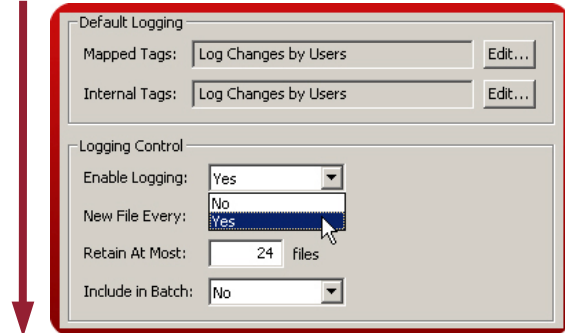
Step 5 Assign user rights.



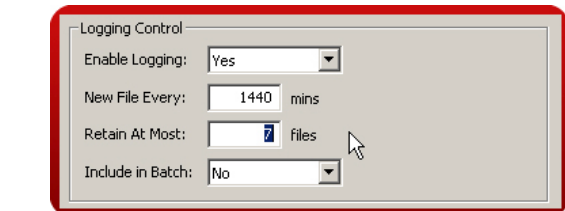
Step 6 Define the data changes to be logged.



Step 7 Enable the logging.



Step 8 Enter the logging parameters.



The security logger will now record users actions and data changes.

Security Logger setup complete!

Reference: http://www.redlion.net/g3features/G3_Feature_-_Security_Logging.html

For more information on Crimson 2.0, refer to the manual