

# COMPACTFLASH CARD ACCESS

## DESCRIPTION



Not only does the CompactFlash interface provide expandable storage for data and event logging, it also provides a means to load the panel's database without a PC. Through use of the User Programs portion of Crimson 2.0, users can create custom recipe and reporting structures.

## BENEFITS

- Use the memory card as a drive on your G3 and save any and all process data.
- Easily accessible using USB connection or FTP synchronization.
- Provide virtually unlimited memory for your reports, recipes, data, events and security logs.
- OEMs can send updates to their customers on CF card, allowing the customer to quickly change their program without a PC.

## EXAMPLE

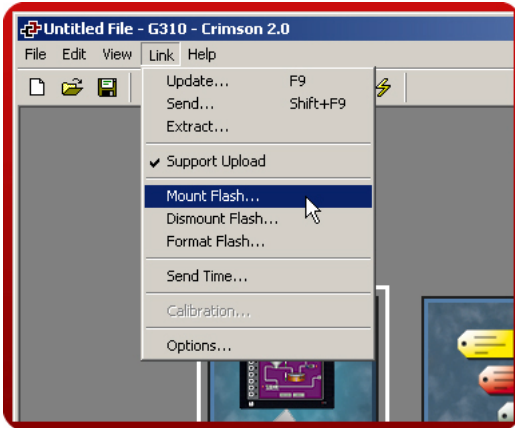
A production manager in a bakery can access packaging line summary reports on his server for production numbers and shipping results. The reports are generated by G3s that synchronize with the server on a regular basis.

# USING C2 COMPACTFLASH TOOLS

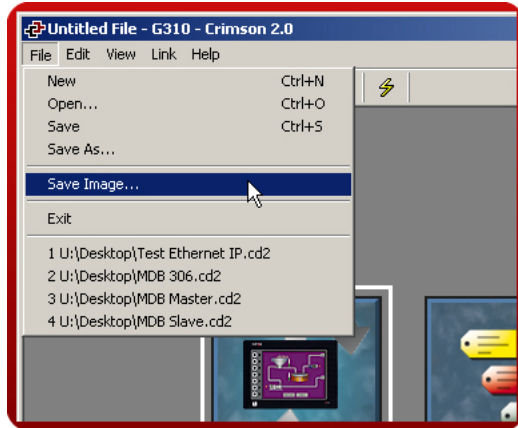
## Mounting the CompactFlash Card

## Saving an image on the card

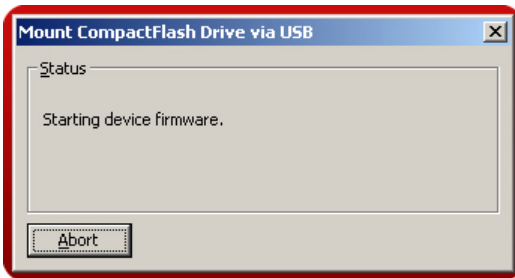
**Step 1** Click on Link>Mount Flash



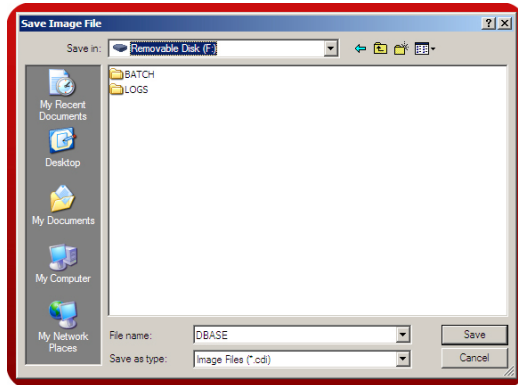
**Step 4** Click File>Save Image



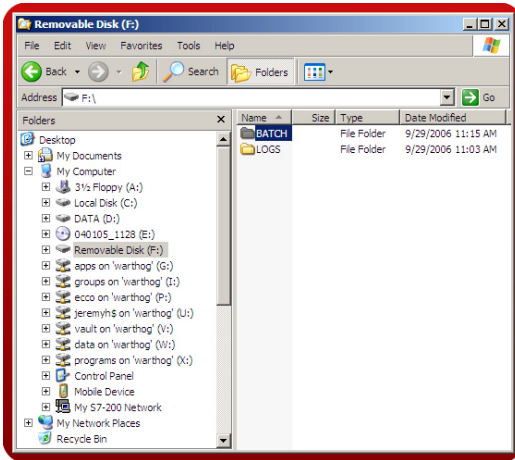
**Step 2** The G3 will cycle power to mount the card.



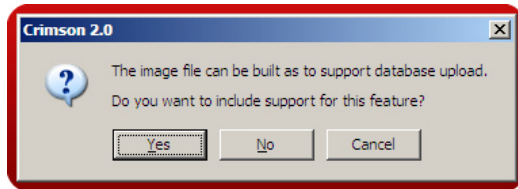
**Step 5** Select the CompactFlash Card and name the file DBASE.cdi.



**Step 3** The card is then available as a drive under Windows Explorer.



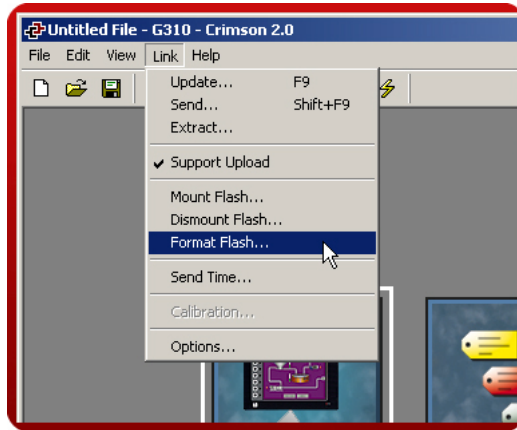
**Step 6** Click Yes to support upload.



Tutorial continues on next page.

## Formatting the CompactFlash Card.

**Step 7** Click on Link>Format Flash



**Step 8** Crimson 2.0 will require confirmation.

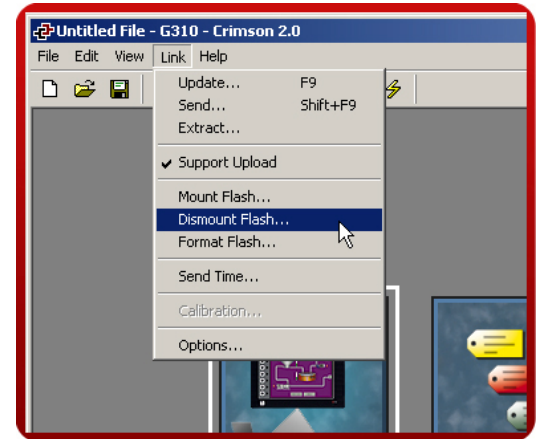


**Step 9** The Formatting window will stay until the CompactFlash is formatted.



## Dismounting the CompactFlash card.

**Step 10** Click Link>Dismount Flash



CompactFlash setup complete!

Reference: [http://www.redlion.net/g3features/G3 Feature - Compact\\_Flash.html](http://www.redlion.net/g3features/G3%20Feature%20-%20Compact_Flash.html)

For more information on Crimson 2.0, refer to the manual.