

## **EZ Automation EZPLC Master Driver**

### **Information Sheet for Crimson v2.0**

---

#### **Compatible Devices**

EZ Automation EZPLC

#### **Verified Device**

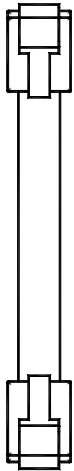
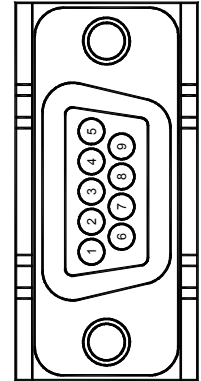
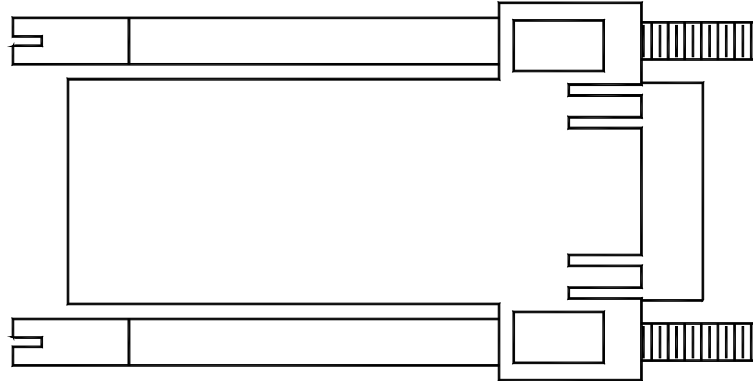
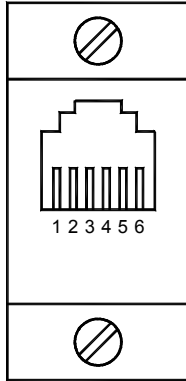
EZPLC-A-32E

#### **Accessible Data**

<b>Prefix</b>	<b>Description</b>
I	I Discretes
O	O Discretes
S	S Discretes
IR	IR Registers
OR	OR Registers
R	R Registers
SD	SD Discretes
SR	SR Registers
XR	XR Registers
#R	#R Registers
XS	XS Registers
#S	#S Registers

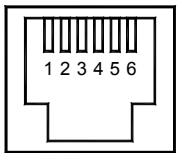
## Communication Cable, G3 / Modular Controller / Data Station Plus to generic RS232.

# CBLGEN01 – 10' long



Connections			
FROM RLC UNIT	Name	CONNECTER PINOUT	
		RJ12	DB9 MALE
1	CTS	1, 6	-
2	Rx	2	2
3	COMM	3	5
4	COMM	4	-
5	Tx	5	3
6	RTS	1, 6	-

The above table denotes the pin names of the RS232 port. When connecting, the pin name at the RS232 port is connected to the opposite of that pin name at the destination device.



RS232 PORT  
(FROM RLC UNIT)