

Yaskawa MEMOBUS TCP

Information Sheet for Crimson v2.0

Compatible Devices

- Yaskawa MP Series Controllers

Verified Device

- MP2200 with CP218IF card

Driver Options: None

Device Options:

Option	Default Value
IP Address	192.168.1.1
Port	510
Unit Number	1

Accessible Data

Prefix	Description	Range
Mx	Memory Words	0 - 32767
Ix	Input Words	0 – 7FFF
MB	Memory Bits	0 – 4095F
IB	Input Bits	0 – 7FFF

NOTE: When configuring Memory Bits, two parameter fields appear. The first is the base address, the second is the bit. E.g. MB123 is programmed with 12 in the first field, and 3 in the second. The first field is decimal, the second is Hex.

MB is MB123

Cable Information: Connect using a cross-over cable.

Appendix A: Controller programming for TCP communication.

Configure the CP218IF card as follows, using MotionWorks Module Configuration:

Select the Module:

The screenshot shows the 'Engineering Manager' software interface. The main window is titled 'Module Configuration' for 'MP2200-02 Online Local'. It displays the following configuration details:

PT#: 1 CPU#: 1

Select Rack	Enable/Disable
Rack 1	Enable
Rack 2	Disable
Rack 3	Disable
Rack 4	Disable

Controller

Rack 1 | Rack 2 | Rack 3 | Rack 4

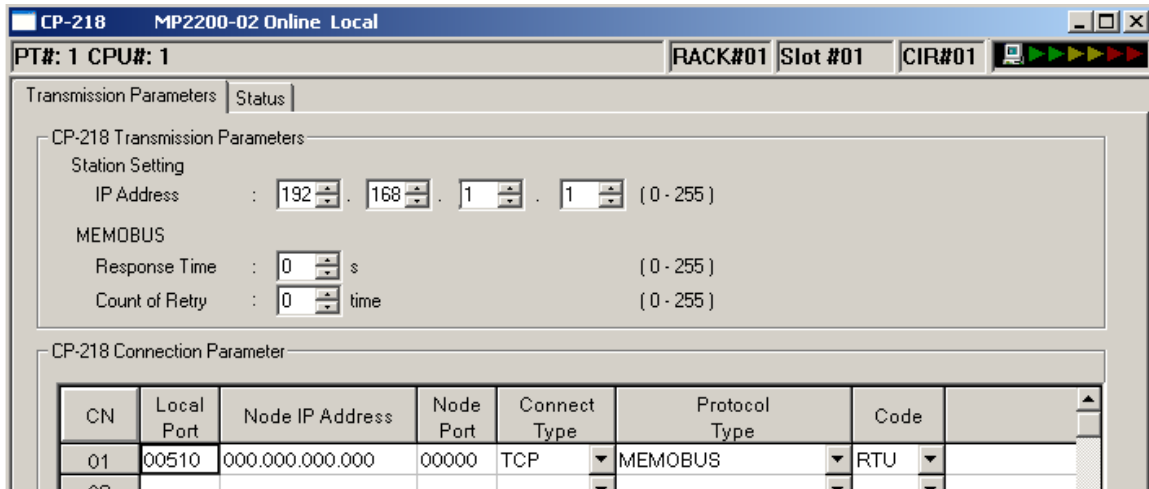
Slot Number	00	01	02
Module Type	CPU-02	218IF-01	UNDEFINED
Status	Unsetting	Running	

218IF-01: The module has Ethernet and RS232 functions.

Module Details 218IF-01 RACK#01 SLOT#01

Slot Number	1	2
Module Type	217IF	218IF
Circuit Number	01	01
I/O Start Register	—	—
I/O End Register	—	—
Motion Start Register	—	—
Motion End Register	—	—
Details		
Status	Running	Running

Assign the Connection Parameters as follows (Default Values shown):



Insert the following rungs in the controller ladder program so that they will be executed at startup:

