

# Crimson 3.0 DSP/HMI/MC/PTV Quick Start Guide

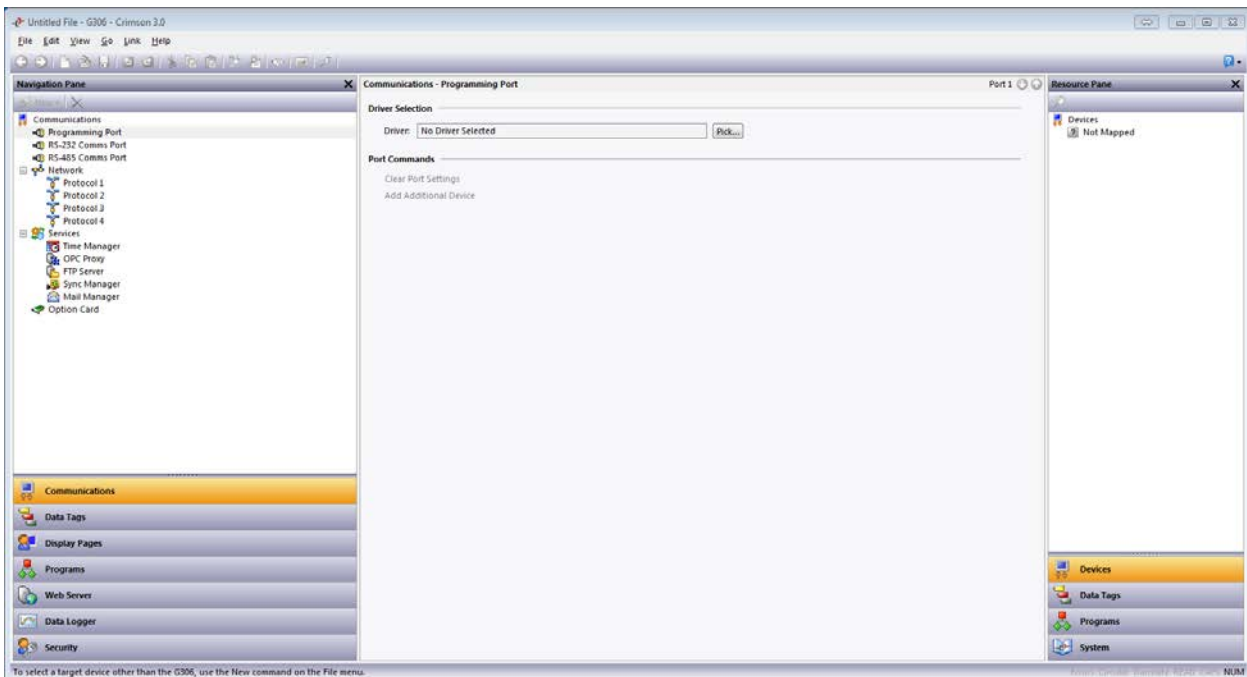


## Getting Started

### Model Selection

1. Click *File-New*.
2. Select the model from the list.
3. Click *OK*.

### Crimson Window Layout



### The Navigation Pane

The left-hand portion of the window is called the Navigation Pane. It is used to move between different categories of items within a Crimson configuration file. Each category is represented by a bar at the base of the pane. Clicking on that bar will navigate to that section. The top section of the Navigation Pane shows the available items in the current category, and provides a toolbar to allow those items to be manipulated.

### The Resource Pane

The right-hand portion of the window is called the Resource Pane. It is used to access various items that are of use when editing the current category. Just like the Navigation Pane, it contains a number of categories which can be accessed via the category bars. Items in a given resource category can be drag-and-dropped to the places where you want to use them. For example; a data tag can be picked up from the Resource Pane and dropped on a configuration field to make that field dependent on the value of the selected tag. Many items can also be double-clicked, thereby setting the current field to that item.

### The Editing Pane

The central portion of the window is used to edit the currently selected item. Depending on the selection, it may contain a number of tabs, each showing a given set of the properties for that item, or it may contain an editor specific to the item that you are working on.

## Categories (that are referenced in this guide)



### **Communications**

This category specifies which protocols are to be used on the target device's serial ports and Ethernet ports.

### **Data Tags**

This category defines the data items that are to be used access data within the remote devices, or to store information within the target device.

### **Display Pages**

This category is used to create and edit display pages. The page editor allows you to display various graphical items known as primitives.

### **Data Logger**

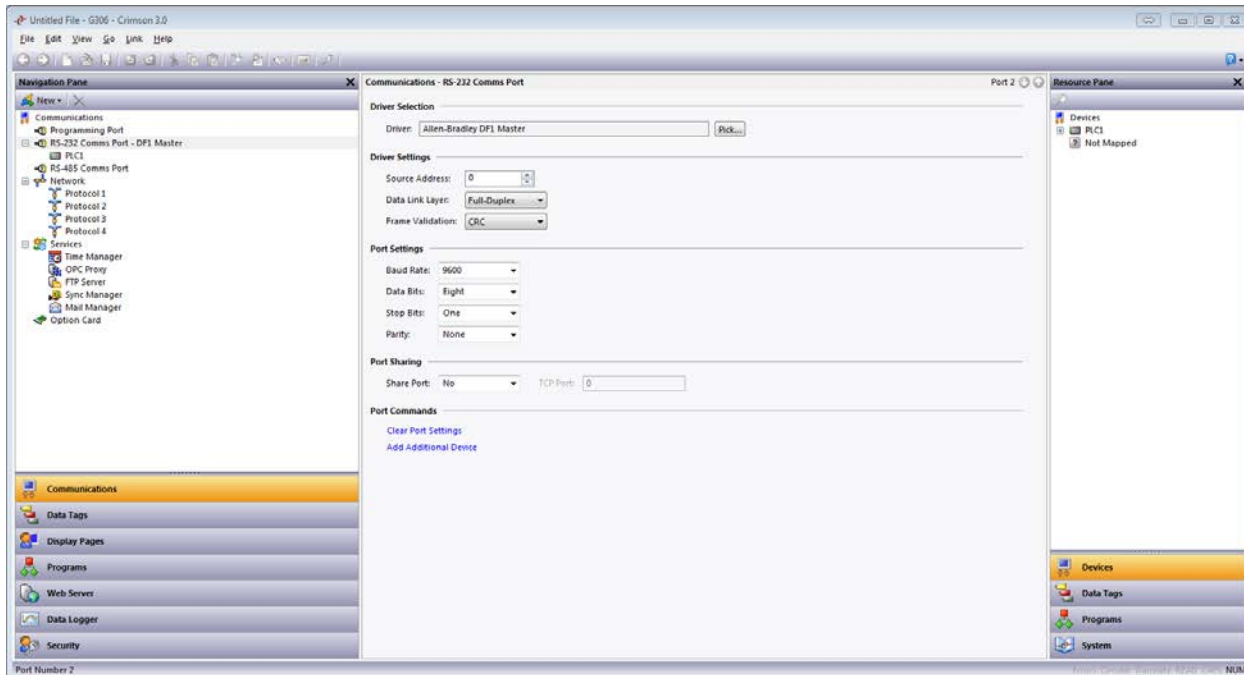
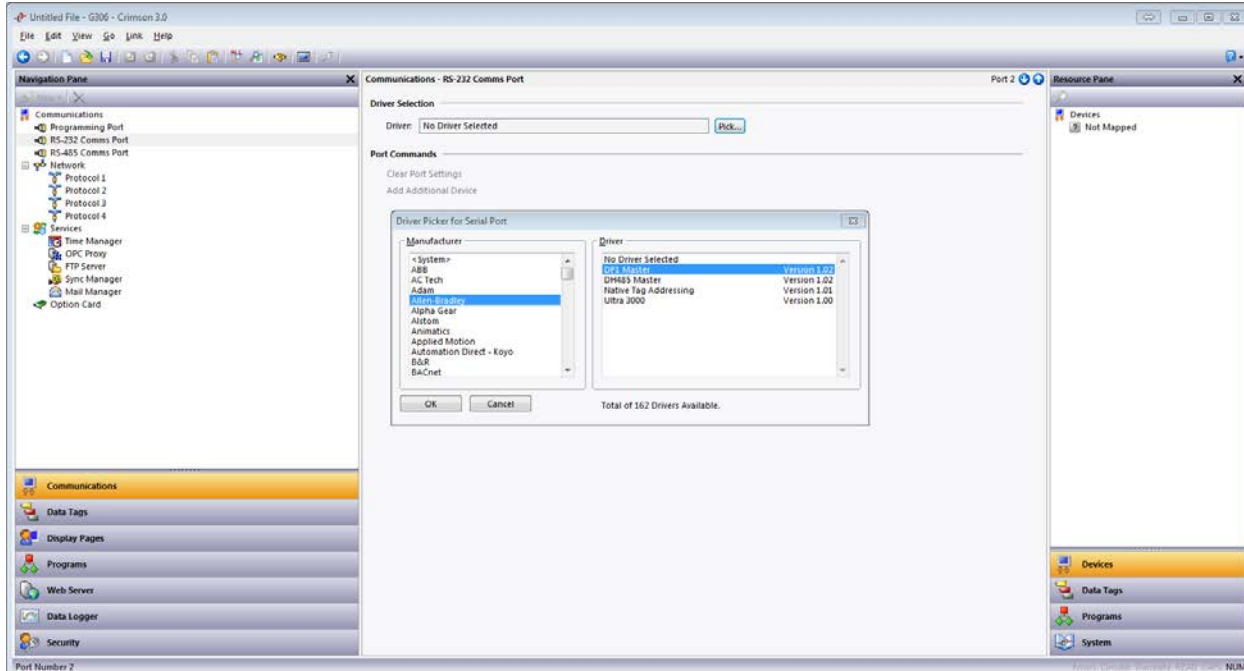
This category is used to create and manage data logs, each of which can record any number of variables to the target device's memory card.

## Communications

### Protocol Selection

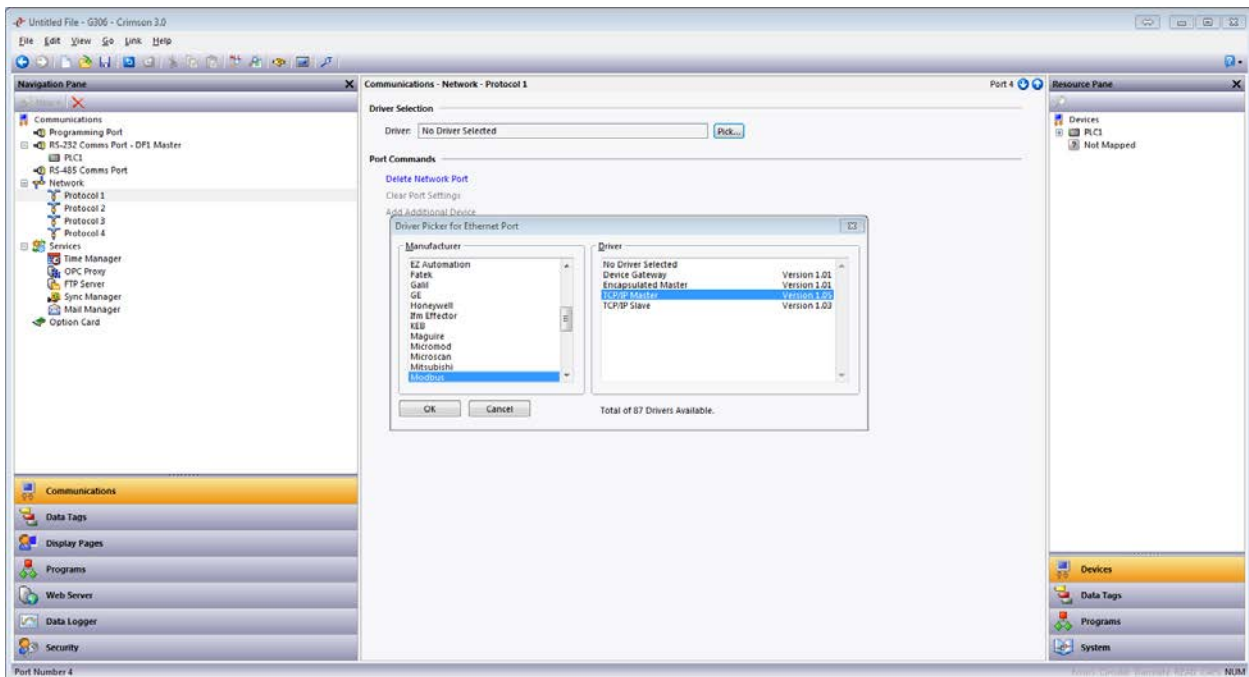
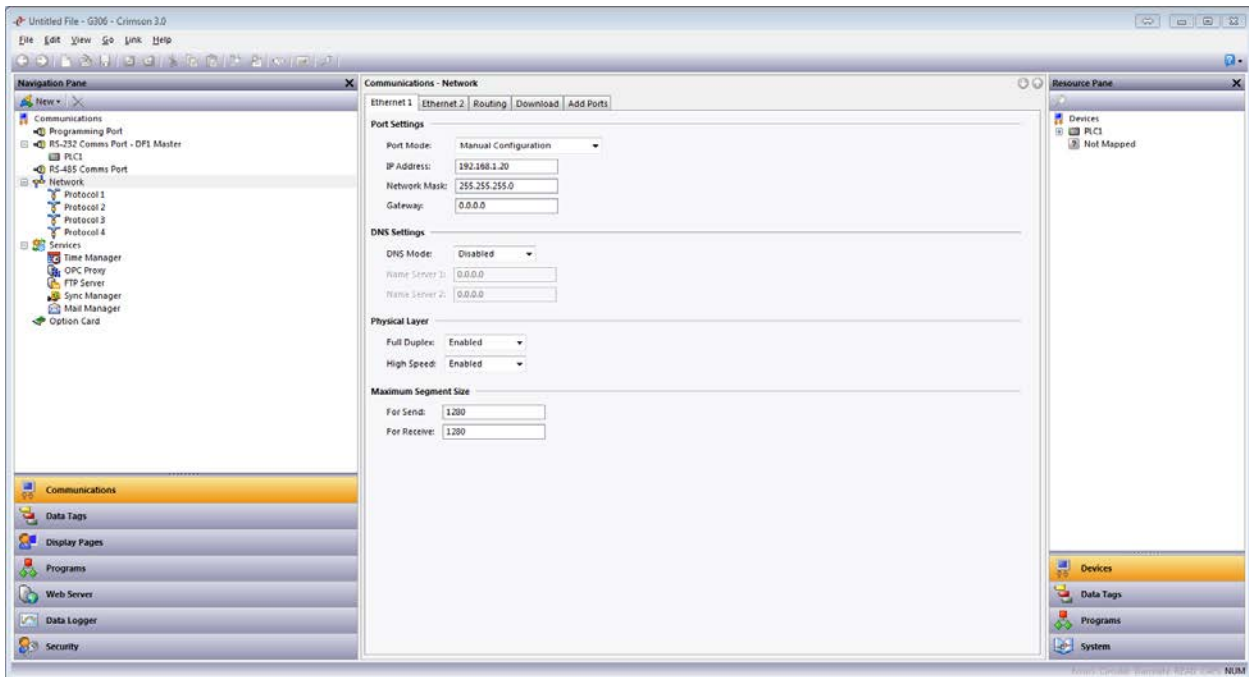
#### A. Serial Communications

1. Click on the port to configure.
2. Click *Pick...* next to the Driver Selection.
3. Choose the Manufacturer/Protocol.
4. Choose the driver.
5. Click *OK*.
6. Configure the port settings to match the device that the unit will communicate with.



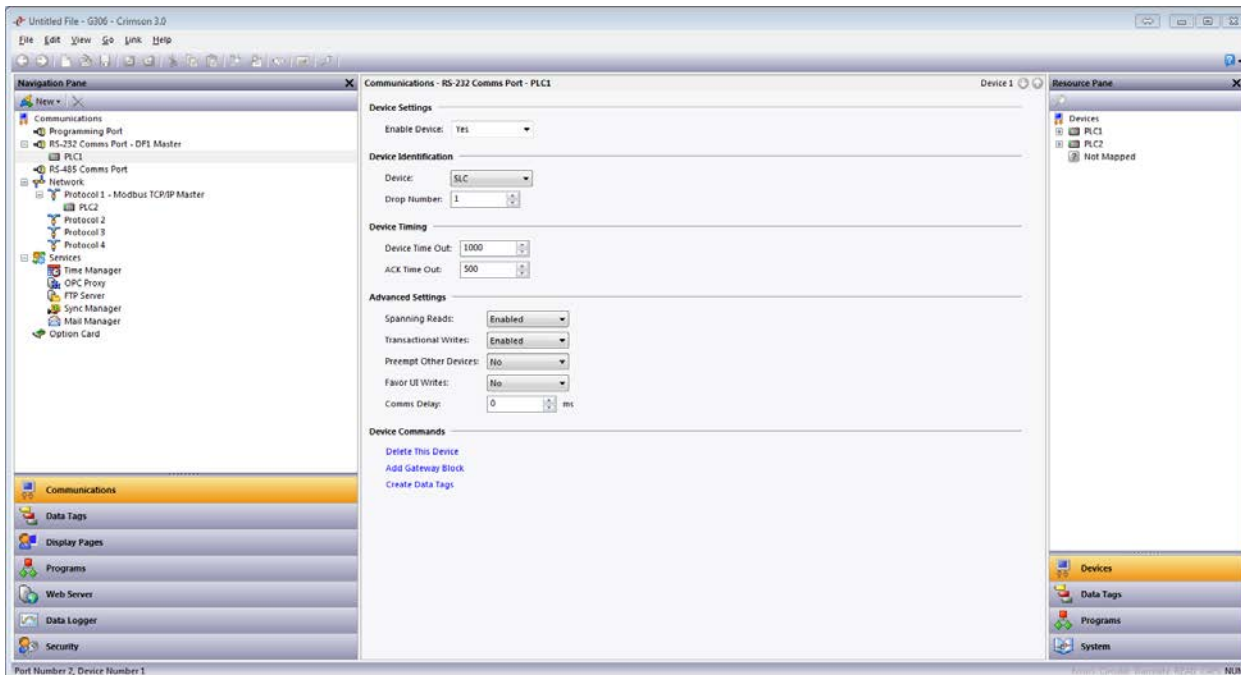
## B. Ethernet Communications

1. Click on *Network* to configure the Red Lion unit's Ethernet port.
2. Select the Port Mode and Configure IP information as needed.
3. Click the first available Protocol.
4. Click *Pick...* next to the Driver Selection.
5. Choose the Manufacturer/Protocol.
6. Choose the driver.
7. Click *OK*.



## Device Configuration

1. Click on the device.
2. Configure the settings (if applicable) to match the device that the unit will communicate with.
  - a. Additional information for the driver can be found in the driver information sheet (<http://www.redlion.net/cables-drivers>) or in a Tech Note written specifically for the driver (<http://www.redlion.net/support/documentation/red-lion-documentation/tech-notes>)

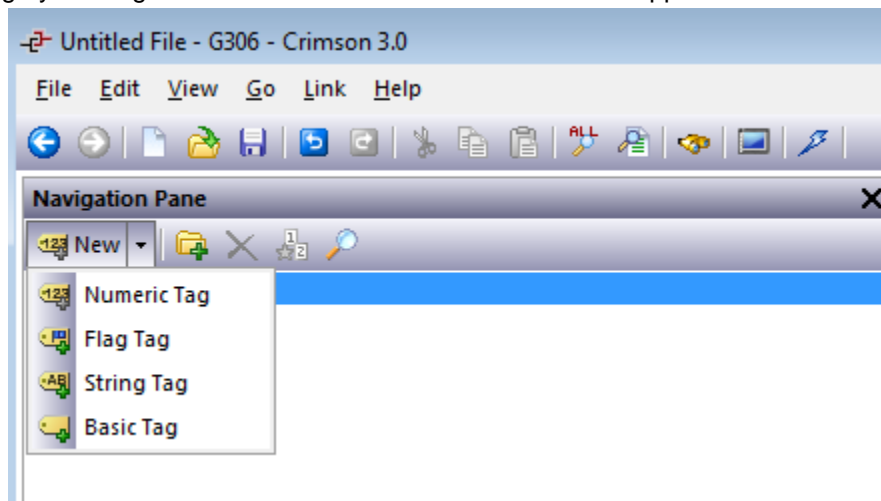


**Note:** When configuring a master driver more devices can be added by clicking on the port/protocol and choosing *Add Additional Device*

## Data Tags

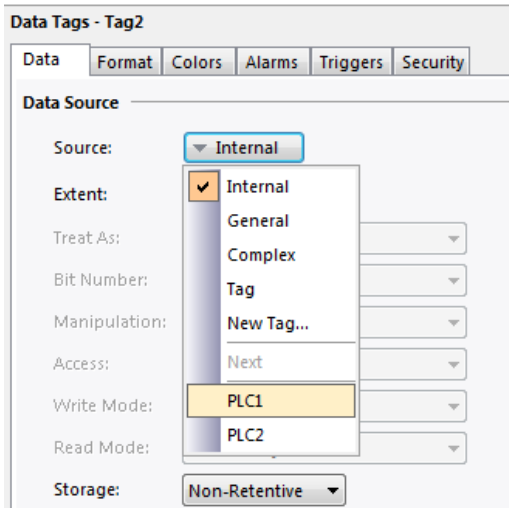
### Creating Tags

1. Click on *Data Tags* in the Navigation Page.
2. Create a new tag by clicking the black down arrow next to *New* in the upper-left of the Navigation Pane.



### A. Integer/Floating Point

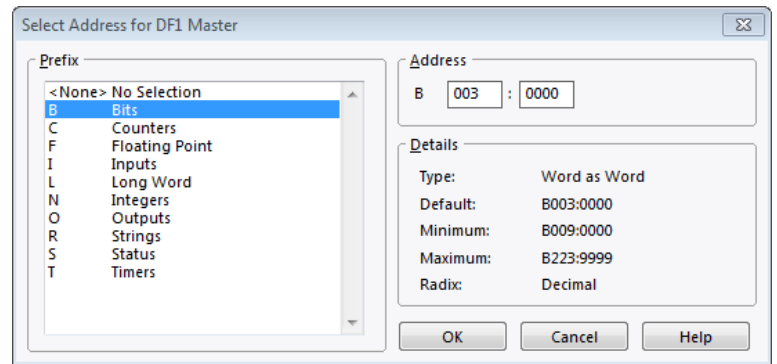
1. Choose *Numeric Tag*.
2. Click on the tag.
3. Next to Source, click *Internal*.
4. Select the device to read from.
5. Select the address/register to be associated with this tag.
6. Click *OK*.



### B. Bits

1. Choose *Flag Tag*.
2. Click on the tag.
3. Next to Source, click *Internal*.
4. Select the device to read from.
5. Select the address/register to be associated with this tag.
6. Click *OK*.

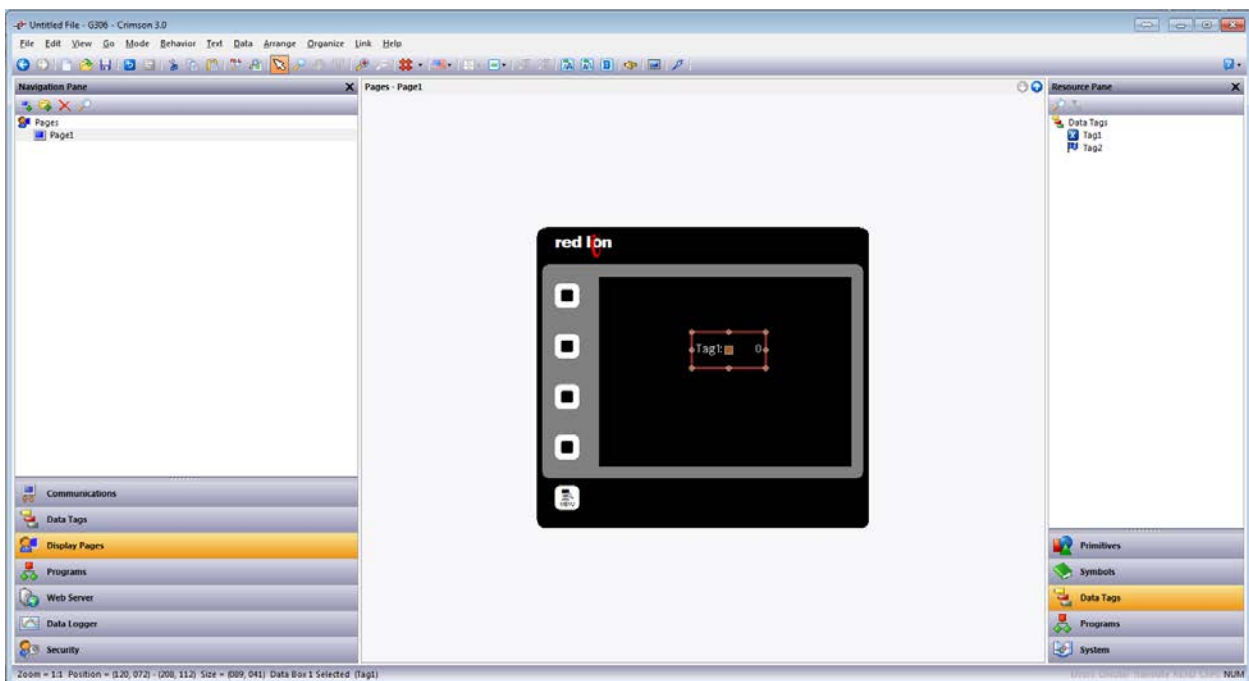
**Note:** To access a bit within a word, change the *Treat As* to *Bit Array Little-Endian* and then select the bit from the Bit Number drop down that appears.



## Display Pages

### Simple Display

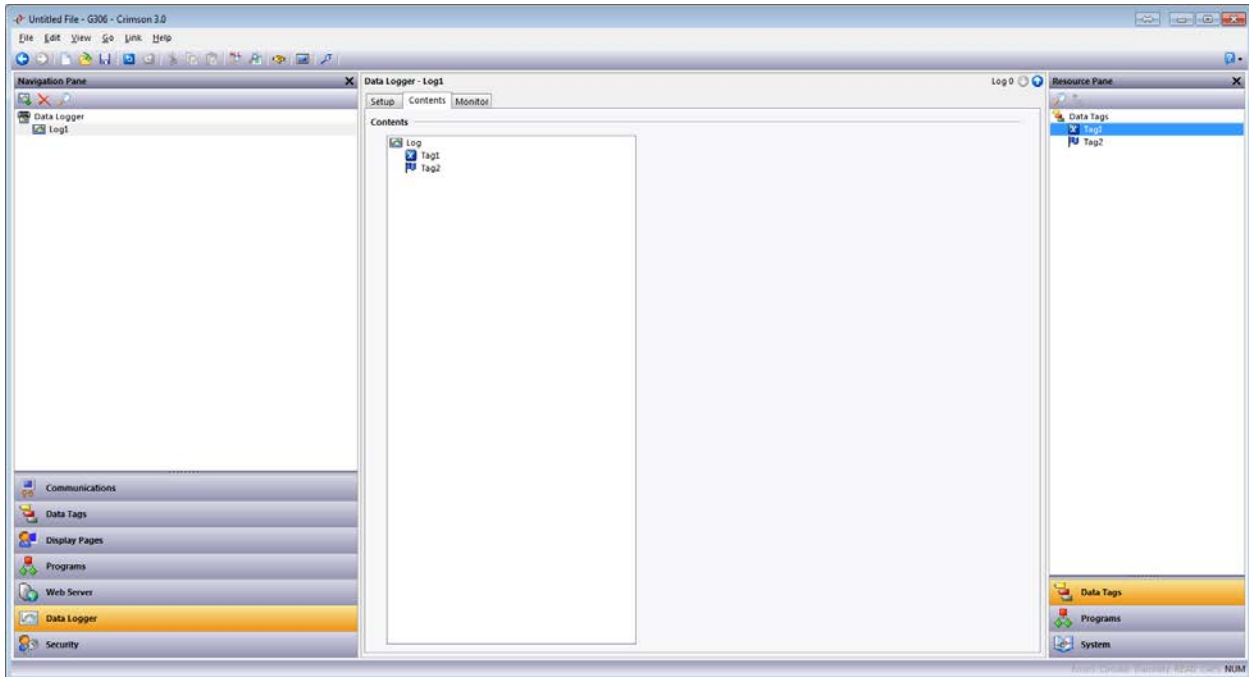
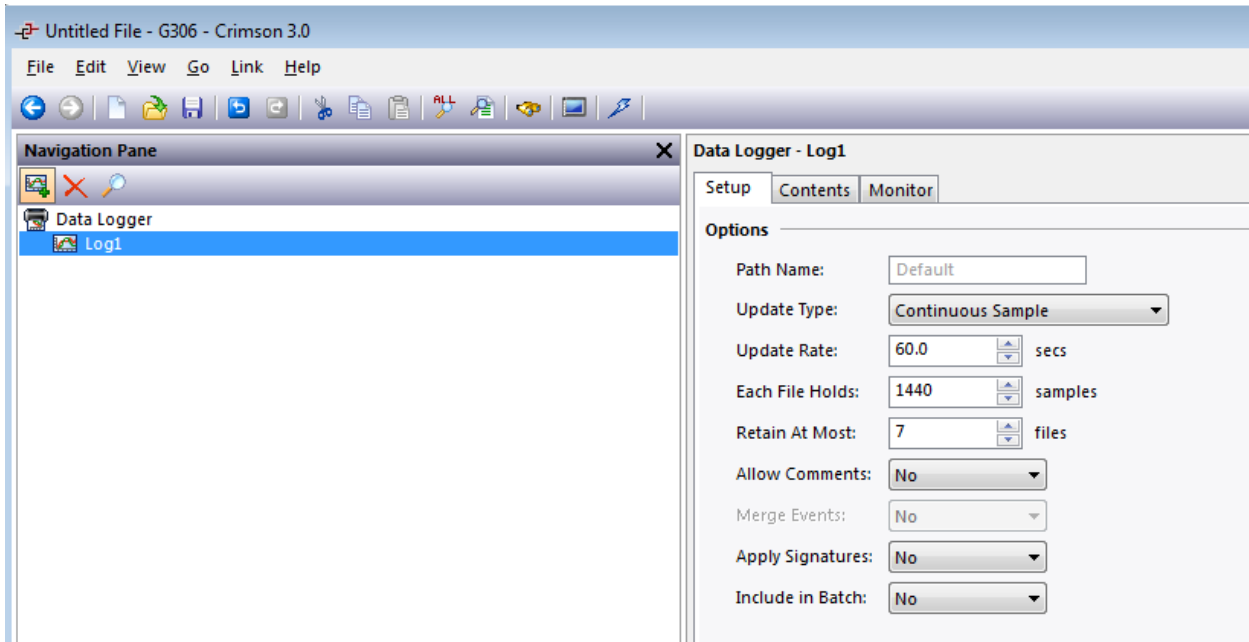
1. Click on *Display Pages* in the Navigation Page.
2. Click on *Data Tags* in the Resource Pane.
3. Click and drag a tag from the Resource Pane to the display.



## Data Logger

### Create and Populate a Log

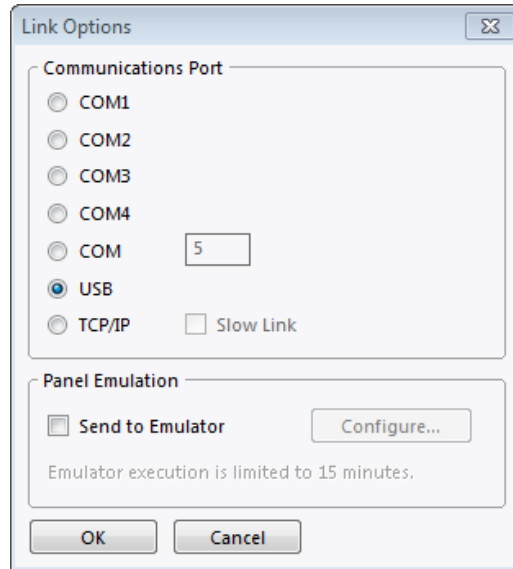
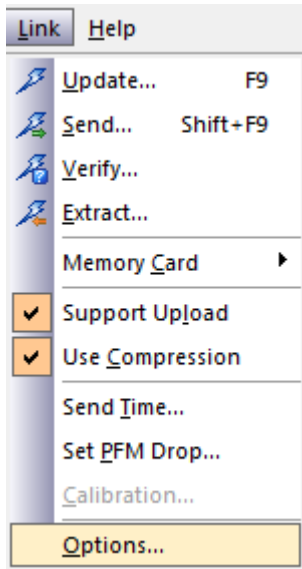
1. Click on *Data Logger* in the Navigation Page.
2. Click the New Log icon in the upper-left of the Navigation Pane.
3. Click on *Log1*.
4. Adjust the Options as needed.
5. Click on the *Contents* tab in the Editing Pane.
6. Click and drag tags from the Resource Pane into the Contents window of the Editing Pane.



## Programming the Device

### Downloading to the Unit

1. Click on *Link-Options*.
2. Select the connection method.
3. Click *OK*.
4. Click *Link-Update* to send the file to the unit.



### Red Lion Technical Support

If you have any questions or trouble contact Red Lion Technical Support by emailing [support@redlion.net](mailto:support@redlion.net) or calling 1-877-432-9908.