

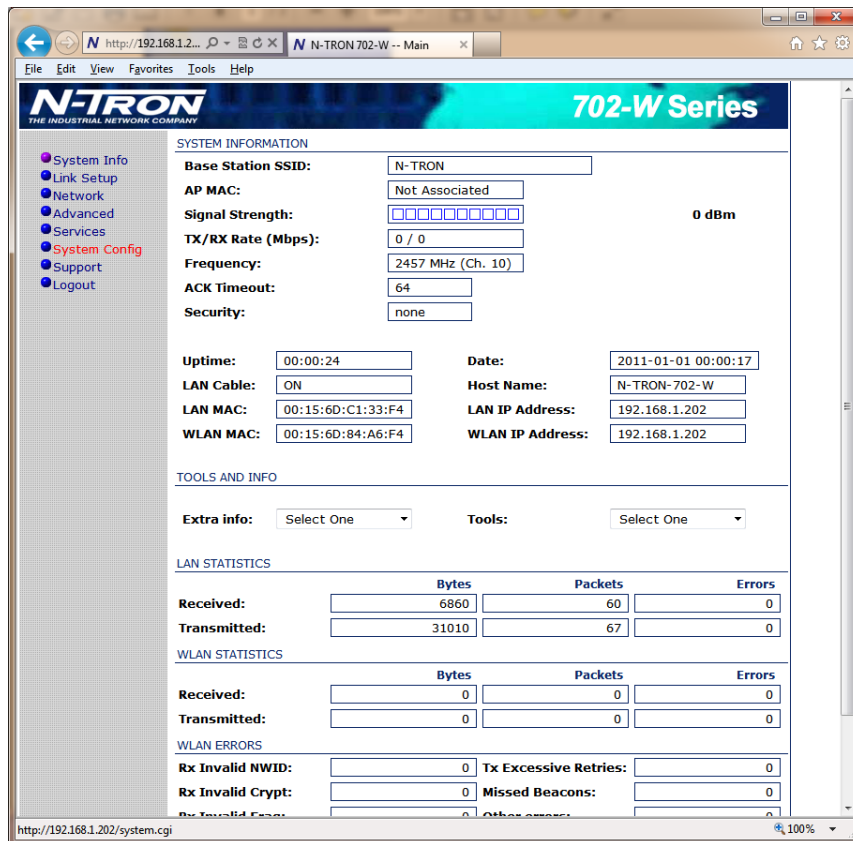
N-Tron 702-W Firmware Upgrade Procedure

Login to the 702-W device by typing its IP Address in your web browser's address bar. Enter the username "admin" and password "admin" as shown below:



Press the [OK] button.

Use sidebar menu on left and click on the [System Config] menu item as shown in red below:



Click on the [Upgrade] button at the top of this page

The screenshot shows the N-TRON 702-W Series web interface. The left sidebar contains a navigation menu with the following items: System Info, Link Setup, Network, Advanced, Services, System Config, Support, and Logout. The main content area is titled "702-W Series" and contains several sections:

- FIRMWARE**: Displays "Firmware Version: 702W_2.0.18" with an "Upgrade..." button.
- HOST NAME**: Displays "Host Name: N-TRON-702-W" with a "Change" button.
- ADMINISTRATIVE ACCOUNT**: Includes fields for "Administrator Username: admin", "Current Password:", "New Password:", and "Verify New Password:", with a "Change" button.
- INTERFACE LANGUAGE**: Includes a "Language:" dropdown set to "English" and a "Set as default" button.
- CONFIGURATION MANAGEMENT**: Includes "Backup Configuration:" with a "Download..." button, and "Upload Configuration:" with a "Browse..." button and an "Upload" button.
- DEVICE MAINTENANCE**: Includes "Reboot..." and "Reset to defaults..." buttons.

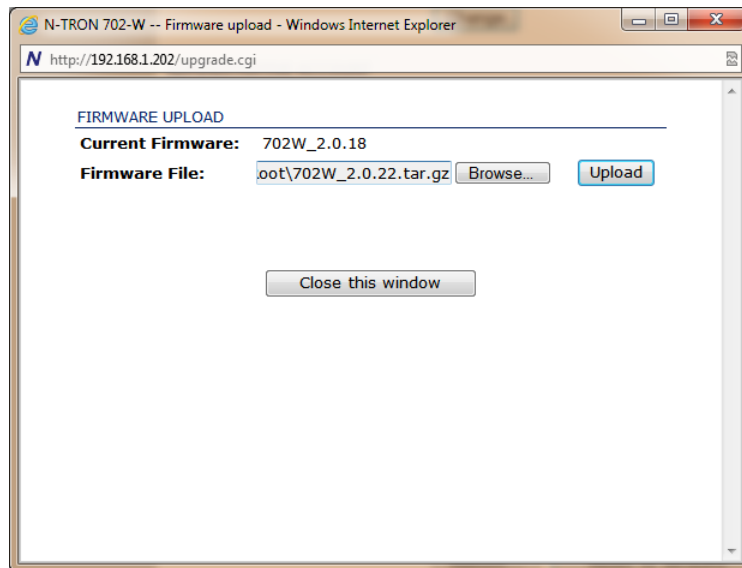
The footer of the interface states: "© Copyright 2008-2011 N-Tron Corporation All rights reserved."

Click on the [Browse] button and select the 702W_#.#.#.tar.gz file for the upgrade, (where #.#.# is the new version number).

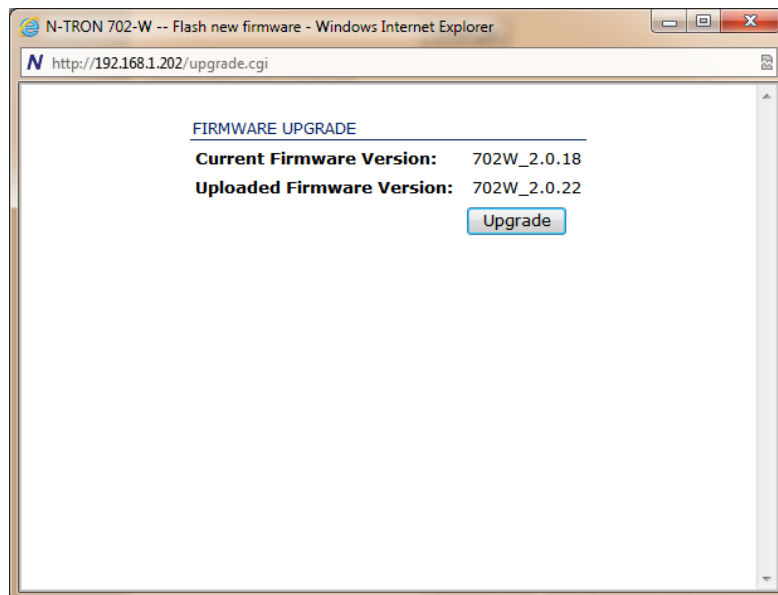
The screenshot shows a "Firmware upload" dialog box titled "N-TRON 702-W -- Firmware upload - Windows Internet Explorer". The address bar shows "http://192.168.1.202/upgrade.cgi". The dialog contains the following elements:

- FIRMWARE UPLOAD**: Section header.
- Current Firmware:** 702W_2.0.18
- Firmware File:** A text input field followed by a "Browse..." button and an "Upload" button.
- Close this window**: A button at the bottom.

Click [Upload].



Confirm the file version comparison. Begin the firmware upgrade by clicking [upgrade].



You will be prompted when the upgrade has been completed.