

▶▶▶ Cellular Routers for Primary and Backup Connectivity



PRODUCT HIGHLIGHTS

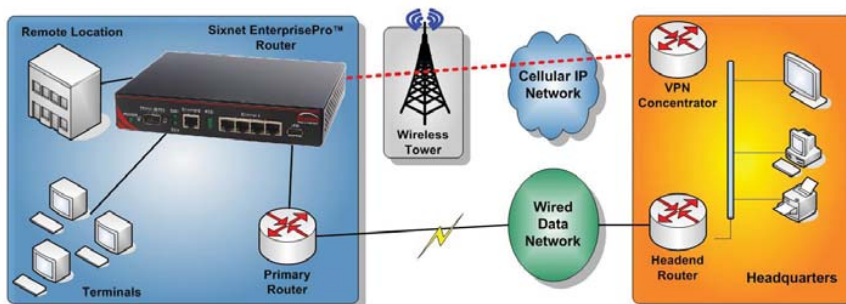
- High performance 3G technology
- IP transparency
- Out-of-band console for remote access
- Remote configuration and updates
- Web-based monitoring, administration and maintenance of network

APPLICATIONS

- WAN backup
- Remote offices

Sixnet's EnterprisePro™ Routers provide high-speed 3G connectivity and robust remote management capabilities typically only associated with the most advanced platforms. Near real-time failover capabilities from circuit disruptions and primary router failures make our EnterprisePro Routers an ideal primary and backup solution for organizations where communication interruptions could result in key service disruption and overall revenue loss.

Working in conjunction with the SixView™ Manager, our routers provide user-friendly, web-based management and configuration services that enable fast, easy deployment and allow users to effectively manage thousands of devices from a single console. Additionally, the EnterprisePro routers provide out-of-band access to the primary router, enabling remote problem diagnosis without the need for expensive landlines.



FEATURES & BENEFITS

Fast, Reliable Wireless Data Access

- Reduces operational costs
- Minimizes application downtime
 - High-speed cellular connectivity
 - Wireless USB Aircard
 - o 3G (CDMA-EVDO Rev. A or GSM-HSPA)
 - o Embedded 3G radios
 - Diversity of antennas

Remote Management & Monitoring

- Increases network visibility
- Speeds devices configuration and management
 - Mass configuration changes
 - Remote administration
 - Key metric reporting
 - Remote software and firmware updates
 - Serial and console ports of OOB

WAN Link & Primary Router Failover

- Reduces risk of cataclysmic network failure
- Diminishes revenue loss from downtime
 - Remote router access for diagnostics
 - VRRP support allows clustering
 - IP transparency

Built-In Security & Routing

- Protects against unwanted intrusion
- Ensures uninterrupted communication
 - Dynamic routing
 - IPSec, SSL, GRE tunneling

Flexible Deployment Options

- Reduces total cost of ownership
- Provides investment protection
 - DCE and DTE serial ports
 - 1 or 5 Ethernet ports
 - 4 port switch combination

SPECIFICATIONS

Cellular Radio Options:

- USB Aircard (carrier-supplied)
- 3G CDMA EVDO Rev A.
- 3G GSM HSPA

WiFi Option

- Access point mode (only on R-xx20 models)

GPS Option

- GPS antenna with Geozone™

Ethernet Interface Options

- 1 RJ45 10/100 (R-1100 & R-1300-x)
- 5 RJ45 10/100 (R-3100 & R-3300-x)

Serial Interface Options

- 1 RS-232 Serial DB9 (male)
- 1 console port
- 4 RS-232 Serial DB9 (male) on R-xx05 models (4 port expansion option, 5 total)

IP

- NAT, port forwarding, Dynamic DNS, DHCP
- Stateful inspection firewall
- IP transparency

Routing Protocols

- OSPF, BGP, RIP

Encapsulation Protocols

- GRE and IP-in-IP

Tunneling

- IPSec-VPN and SSL

Clustering

- VRRP

CPU

- PowerPC RISC transparency

Operating System

- Linux 2.6 kernel

LED Status Indicators

- Signal strength, activity, link state

Power

- 12v DC, 1350mA, 16W

Physical

- Dimensions: 7.75" x 1.44" x 6.20" (19.7cm x 3.7cm x 15.7cm)
- Weight:
 - 2lbs 3oz/992g (Aircard models)
 - 2lbs 5oz/1050g (radio models)

Environmental

- Operating temp: -40° C to +60° C
- Humidity: 0 to 90% non-condensing

Accessories

- Power supply (wall mount) 12v 1.35A
- Ethernet cable 3'
- One 3dB magmount with 3' cable (radio models)

SELECTION GUIDE

Model	Ethernet Ports	Serial Ports	WiFi	Cellular Radio
R-1100	1	1		Carrier-provided USB Aircard
R-1120	1	2	Yes	Carrier-provided USB Aircard
R-1105	1	5		Carrier-provided USB Aircard
R-3100	5	1		Carrier-provided USB Aircard
R-3120	5	5	Yes	Carrier-provided USB Aircard
R-3105	5	1		Carrier-provided USB Aircard
R-1300-x*	1	1		Choice of internal 3G CDMA (EVDO Rev. A) or 3G GSM (HSPA)
R-1320-x*	1	1	Yes	Choice of internal 3G CDMA (EVDO Rev. A) or 3G GSM (HSPA)
R-1305-x*	1	5		Choice of internal 3G CDMA (EVDO Rev. A) or 3G GSM (HSPA)
R-3300-x*	5	1		Choice of internal 3G CDMA (EVDO Rev. A) or 3G GSM (HSPA)
R-3320-x*	5	1	Yes	Choice of internal 3G CDMA (EVDO Rev. A) or 3G GSM (HSPA)
R-3305-x*	5	5		Choice of internal 3G CDMA (EVDO Rev. A) or 3G GSM (HSPA)

x* = S (Sprint); V (Verizon); U (US Cellular); G (AT&T/GSM)



www.redlion.net

Connect. Monitor. Control.

Americas
sales@redlion.net

Asia-Pacific
asia@redlion.net

**Europe
Middle East
Africa**
europe@redlion.net

+1 (717) 767-6511

As the global experts in communication, monitoring and control for industrial automation and networking, Red Lion has been delivering innovative solutions for over forty years. Our award-winning technology enables companies worldwide to gain real-time data visibility that drives productivity. Product brands include Red Lion, N-Tron and Sixnet. With headquarters in York, Pennsylvania, the company has offices across the Americas, Asia-Pacific and Europe. For more information, please visit www.redlion.net. Red Lion is a Spectris company.