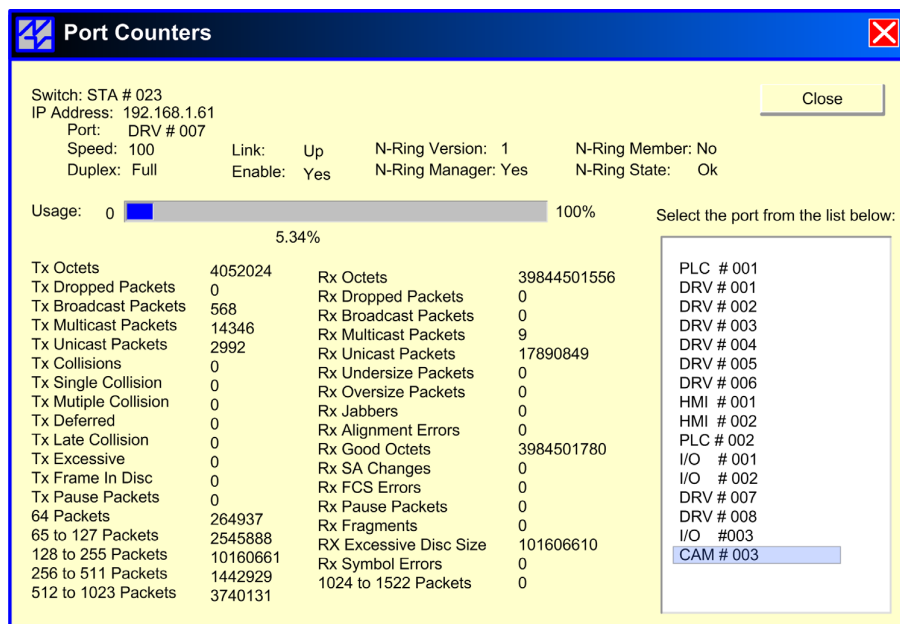


## ▶▶▶ Remote Network Monitoring Software

### Remote Monitoring tool for N-Tron switches



The N-View™ Windows application provides complete remote network traffic and status monitoring for N-Tron 300-N, 500-N, 500-A, 700, 7000, and NT-24K switch series. N-Tron Industrial Ethernet Switches offer outstanding performance and ease of use. They are ideally suited for connecting Ethernet enabled industrial and/or security equipment requiring mission critical reliability.

#### N-View Switch Firmware

N-View capable switches will autocast a small Ethernet packet periodically containing a port-by-port status of the switch. This information includes 5 switch level data points and 41 data points per port. The data is displayed by the N-View Windows application provided with the switch.

#### Ease of Use

The N-View Windows application will automatically search the network for all N-View enabled switches using the unique IEEE MAC addresses to identify each switch.

The Switch MAC address can be selected and assigned a 80 character alias name. Meaningful alias names can also be added to all ports using the configuration software. The switch and port alias names can be saved and used to help identify the location of the switch and the areas or equipment connected to the ports.

#### N-View Data Variables

N-View data variables can be divided into three general categories. **Status variables** indicate the operating condition of the switch or port.

**Traffic variables** count the number of OCTETS (BYTES) of a specific type of ethernet packet that have passed through a port since the start of the switch.

**Error variables** count the number of packet errors seen at each port since the start of the switch.

#### High Quality and Reliability

N-Tron is a worldwide leader in Industrial Networking technology and offers proven reliability quality, and service.

## N-View™ OPC and N-View Switch Ordering Information

N-VIEW OPC	CD with N-View, N-View Software and Manual For use with the following N-View capable N-TRON switches
300	Series Industrial Media Converters and Ethernet Switches (-N models)
500	Series Industrial Ethernet Switches (-N and -A models)
700	Series Industrial Ethernet Switches
7000	Series Industrial Ethernet Switches
NT24k	Series Industrial Ethernet Switches
See Individual Series for specific ordering information.	

## N-View Variable Specifications

### N-View Switch Variables

Switch Alias	User Assigned Alias Name
Switch Status	Online/Offline
Switch Last_Update	Seconds since last unicast update
Switch MAC_Address	Switch MAC Address
Switch Total_Ports	Total number of ports on switch

### N-View Port Status Variables

Port Alias	User Assigned Port Alias Name
Port Duplex	Half / Full / NA
Port Link_Status	Up / Down
Port PortId	1 to 24
Port Speed	10 / 100 / NA
Port Usage	0.00 to 100%
Port_Enable/Disable	On / Off

### N-View Port Error Variables

Port rx_alignment_errors	BYTE Count from Start
Port rx_drop_pkts	BYTE Count from Start
Port rx_fcs_errors	BYTE Count from Start
Port rx_fragments	BYTE Count from Start
Port rx_jabbers	BYTE Count from Start
Port rx_over_size_pkts	BYTE Count from Start
Port rx_sa_changes	BYTE Count from Start
Port rx_symbols_errors	BYTE Count from Start
Port rx_under_size_pkts	BYTE Count from Start
Port tx_deferred_transmit	BYTE Count from Start
Port tx_drop_pkts	BYTE Count from Start
Port tx_excessive_collision	BYTE Count from Start
Port tx_frame_in_disc	BYTE Count from Start
Port tx_late_collision	BYTE Count from Start

### N-View Port Traffic Variables

Port pkts_64_octets	BYTE Count from Start
Port pkts_65to127_octets	BYTE Count from Start
Port pkts_128to255_octets	BYTE Count from Start
Port pkts_256to511_octets	BYTE Count from Start
Port pkts_512to1023_octets	BYTE Count from Start
Port pkts_1024to1522_octets	BYTE Count from Start
Port rx_octets	BYTE Count from Start
Port rx_good_octets	BYTE Count from Start
Port rx_broadcast_pkts	BYTE Count from Start
Port rx_multicast_pkts	BYTE Count from Start
Port rx_unicast_pkts	BYTE Count from Start
Port rx_pause_pkts	BYTE Count from Start
Port tx_octets	BYTE Count from Start
Port tx_collisions	BYTE Count from Start
Port tx_multiple_collision	BYTE Count from Start
Port tx_single_collision	BYTE Count from Start
Port tx_broadcast_pkts	BYTE Count from Start
Port tx_multicast_pkts	BYTE Count from Start
Port tx_unicast_pkts	BYTE Count from Start
Port tx_pause_pkts	BYTE Count from Start

### Minimum System Requirements

Windows XP (32 and 64 bit)  
Windows 7 (32 and 64 bit)  
Windows 8 (32 and 64 bit)



[www.redlion.net](http://www.redlion.net)

Connect. Monitor. Control.

**Americas**  
sales@redlion.net

**Asia-Pacific**  
asia@redlion.net

**Europe  
Middle East  
Africa**  
europe@redlion.net

+1 (717) 767-6511

As the global experts in communication, monitoring and control for industrial automation and networking, Red Lion has been delivering innovative solutions for over forty years. Our award-winning technology enables companies worldwide to gain real-time data visibility that drives productivity. Product brands include Red Lion, N-Tron and Sixnet. With headquarters in York, Pennsylvania, the company has offices across the Americas, Asia-Pacific and Europe. For more information, please visit [www.redlion.net](http://www.redlion.net). Red Lion is a Spectris company.