

# Siemens TI500 Serial Master Driver

## Information Sheet for Crimson

---

### Compatible Devices

Siemens TI500 Series

### Verified Device

Siemens TI545

### Accessible Data

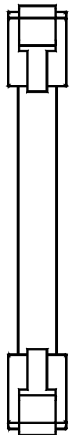
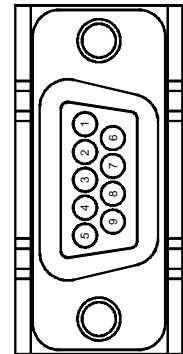
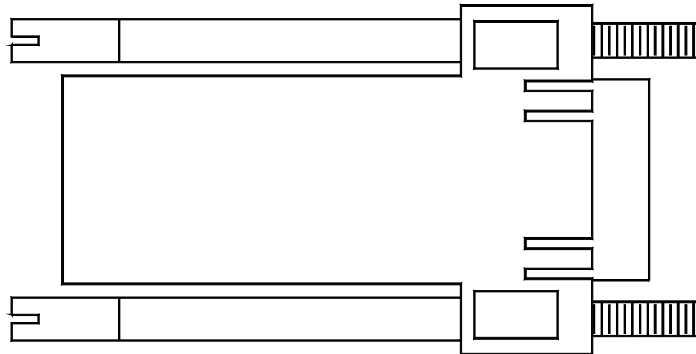
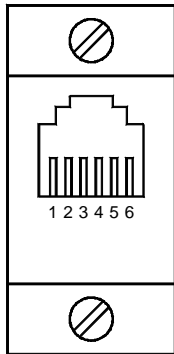
Prefix	Description	Element Size	Access
V	Data Registers	Word	Read / Write
STW	STW Memory	Word	Read / Write
TCC	TCC Memory	Word	Read / Write
TCP	TCP Memory	Word	Read / Write
WX	WX Memory	Word	Read / Write
WY	WY Memory	Word	Read / Write

### Recommendations

Default settings for data bits and parity should be used when these settings are not configurable in the PLC.

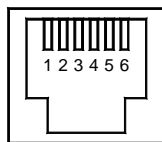
## Communication Cable, G3 / Modular Controller to Texas Instrument's 545 on Port 1.

# CBL SIE04 – 10' long



FROM RLC UNIT	Name	Connections	
		CONNECTER PINOUT	
		RJ12	DB9 MALE
1	CTS	1	-
2	Rx	2	3
3	COMM	3	5
4	COMM	4	-
5	Tx	5	2
6	RTS	6	6, 8

The above table denotes the pin names of the RS232 port. When connecting, the pin name at the RS232 port is connected to the opposite of that pin name at the destination device.



RS232 PORT  
(FROM RLC UNIT)