

Yaskawa TCP/IP MP3000iec Series Communication Driver Information Sheet for Crimson v3.0+

Compatible Devices

Yaskawa MP3000 series devices

Verified Device

Yaskawa MP3300 LIO-05

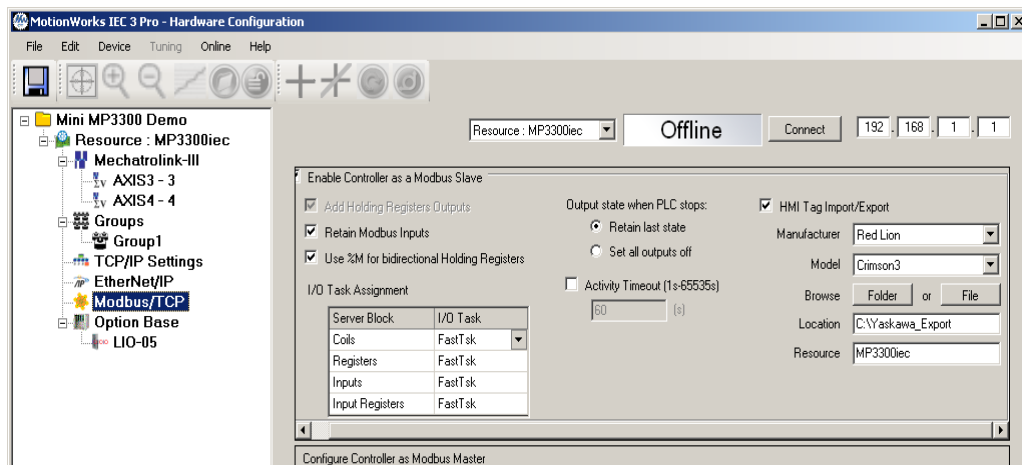
Overview

Red Lion's communication driver for Yaskawa 3000 IEC devices allows data access using both native IEC and Modbus addressing. An import function has also been provided to assist in tag creation.

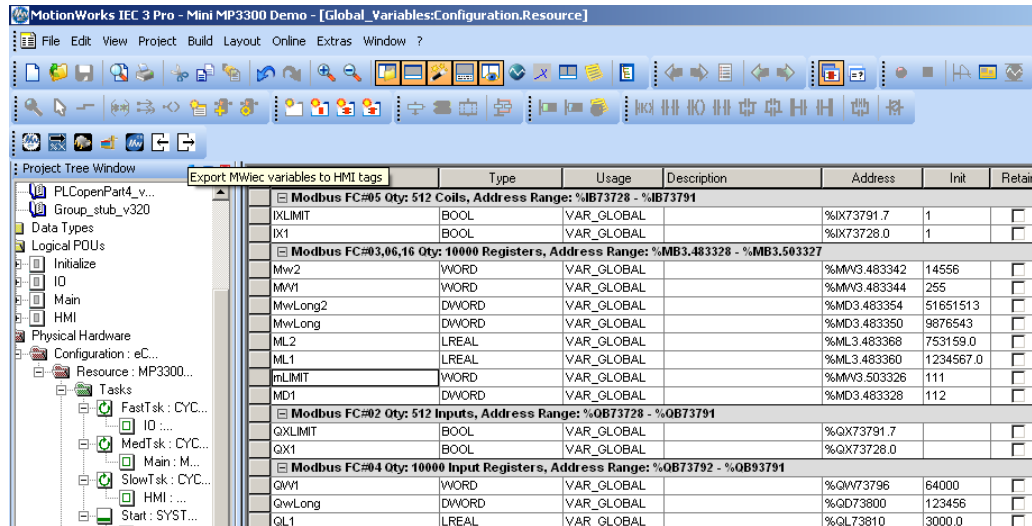
CSV File Import

A CSV file exported from Yaskawa's MotionWorks IEC 3 Pro may be imported such that Crimson tags will be created and mapped accordingly.

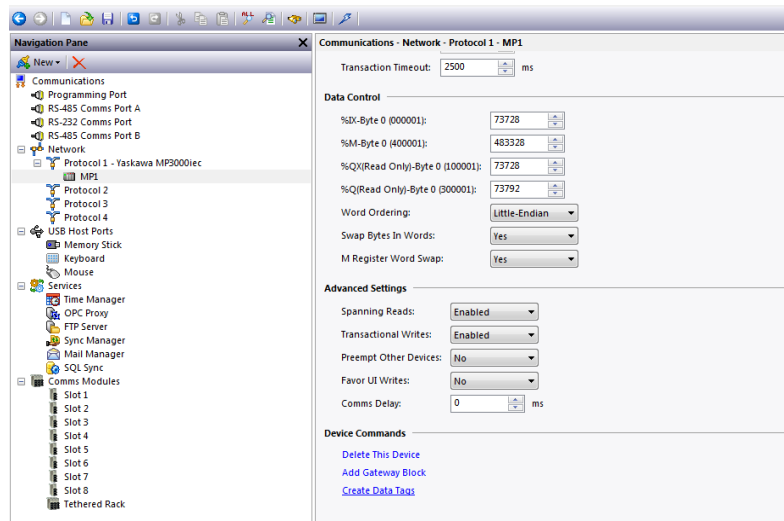
Using the Hardware Configuration utility in MotionWorks IEC 3 Pro, configure the HMI Tag Export for Red Lion Crimson3 as shown below.



In MotionWorks IEC 3 Pro, export the MWIec variables to HMI tags.



In Crimson 3, pick the Yaskawa TCP/IP MP3000iec Series driver for a network protocol then select the device created. Click on the Create Data Tags link under the Device Commands section of the device options.



The Create Data Tags link will open an import file dialog box. Upon navigating to the location and opening the CSV file exported in the previous steps, tags will be created and mapped using the native IEC notation.

Data Access

Native IEC Access

Prefix	Description	Data Types
IX	Input Bit/Memory Location	Bit
QX	Output Bit/Memory Location (Read Only)	Bit
QW	Output Word (Read Only)	Word, Long or DWORD
MW	Memory Word	Word, Long or DWORD
QD	Real: Output Double Word 32-bit (Read Only)	Real
QL	LReal: Output Long Word 64-bit (Read Only)	Real
MD	Real: Memory Double Word 32-bit	Real
ML	LReal: Memory Long Word 64-bit	Real

Modbus Access

Prefix	Description	Data Types
0	Coils	Bit
1	Inputs (Read Only)	Bit
3	Input Registers (Read Only)	Word, Long or DWORD
4	Holding Registers	Word, Long or DWORD
QDM	Real: Input Register 32-bit (Read Only)	Real
QLM	LReal: Input Register 64-bit (Read Only)	Real
MDM	Real: Holding Register 32-bit	Real
MLM	LReal: Holding Register 64-bit	Real

Cable Information

Standard Ethernet Cable

Revision History

12/22/16 – Created