

# Omron FINS over Ethernet Master Driver

## Information Sheet for Crimson v2.0

### Compatible Devices

Omron CJ or CS PLC fitted with appropriate Ethernet communications module.

### Verified Device

Omron CJ1G CPU42H w/ ETN11

### Accessible Data

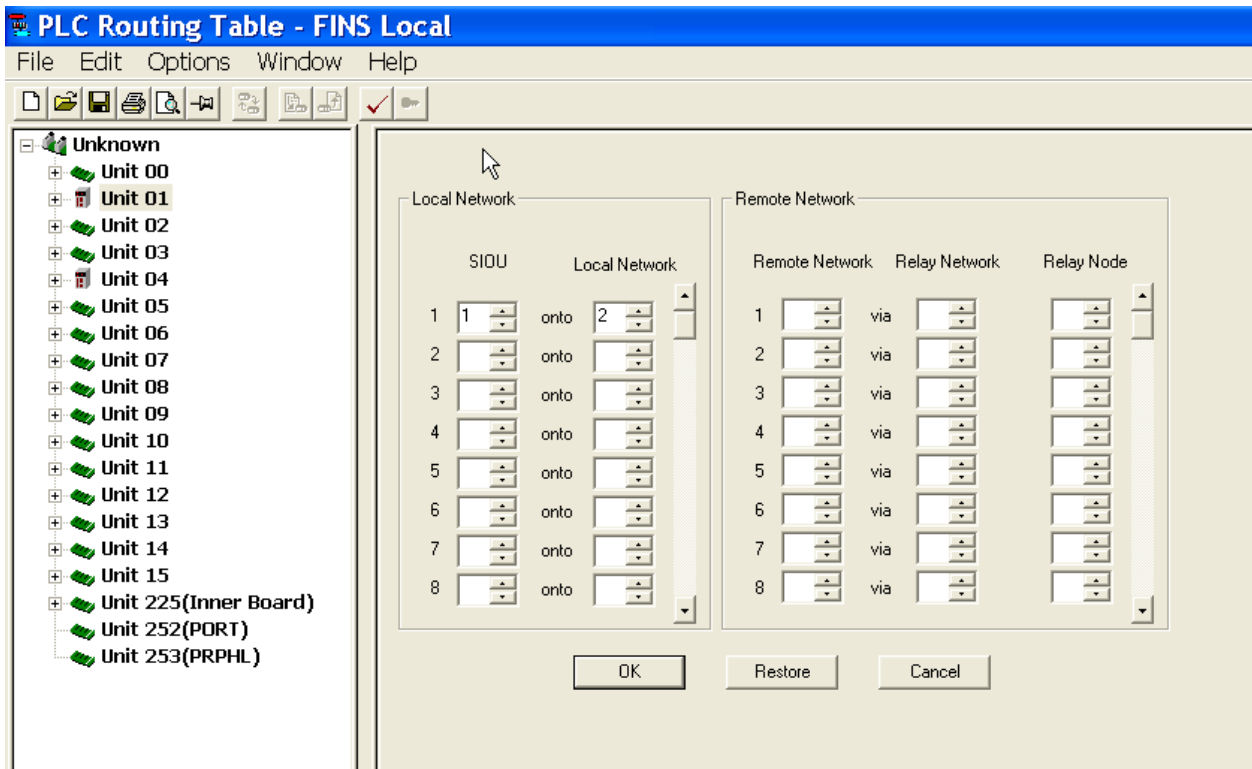
Prefix	Description
CIO	CIO Area
W	Work Area
H	Holding Area
A	Auxiliary Area
TIM	Timer Area
CNT	Counter Area
DM	DM Area
EM	EM Area (Current)
DR	Data Register

Please note: Omron PLC should be in Monitor Mode for write operations.

## Communication Settings

Destination Network: Red Lion unit network, leave at 0  
Destination Node: Last octet of PLC's IP address  
Destination Unit: Red Lion unit node, leave at 0

Source Network: Omron Routing Table Network (set in PLC software)  
Source Node: Last octet of Red Lion unit's IP address  
Source Unit: Omron Card unit number



## Cable Information

Standard 10-Base-T Ethernet Cable